

Plug-in miniature power relay, Encapsulated design with power contact, 2 CO contacts, Input voltage: 230 VAC

Business data

Article number	<u>6485.2</u>
Article name	PRS 2/230V AC
GTIN (EAN)	4044211074241
Packaging unit	1
Quantity unit	PC
Weight per piece (not including packaging)	12.9 g
Weight per piece (including packaging)	14.57 g
Unit of weight	G
Customs number	85364900
Country of origin	AT
Product description	Relay, encapsulated construction

Technical data

Dimensions

Length	29 mm
Width	12.7 mm
Height	15.7 mm

Ratings

Overvoltage category	III
Contamination degree	3 (250 VAC) / 2 (400 VAC)

Input data

Working voltage	>172,5 VDC -
Drop-out voltage	34,5 VAC
Coil voltage	230 VAC -
Power consumption	0,74 W
Coil resistance	32500 Ohm

Output data

Switching voltage / switching voltage max.	250 / 400 VAC
Continuous current max. / Inrush current max.	8 / 15 A
Contact configuration	2 CO contacts
Switching capacity, max.	2000 VA
Electrical lifespan (AC1)	1x10 ⁵
Mechanical lifespan	5x10 ⁶

Materials

Contact material	AgNi 90/10
Working temperature, min.	-40 °C
Working temperature, max.	70 °C

Further technical data

Degree of protection	RTII
Insulation voltage coil/contact	5 kV
Insulation voltage contact/contact	1 kV
Vibration resistance NO/NC	20/5 g
Pinning	5 mm

Technical data

Environmental Product Compliance

REACH Conform	yes
REACH Reference date	2024-01-23
REACH Candidate Substance Note	No
RoHS Conform	yes

Data sheet

6485.2 PRS 2/230V AC



Approvals

Standards and regulations

CE compliant	yes
--------------	-----

Data sheet

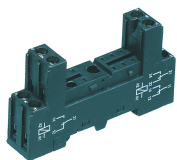
6485.2 PRS 2/230V AC



Media

Accessories

##INVERSE##CONTA-ELECTRONICS



Relay socket base PRS, for miniature power relay with 2 CO contacts, Screw connection, Plug-in option for input/suppression modules, Mounting type: Mounting rail TS 35

Article number	Article name	GTIN (EAN)	Packaging unit
<u>15136.2</u>	PRS 2	4044211046194	1 ST



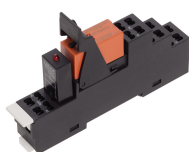
Relay socket base PRS, for miniature power relay with 2 CO contacts, Screw connection, Plug-in option for input/suppression modules, Mounting type: Mounting rail TS 35

Article number	Article name	GTIN (EAN)	Packaging unit
<u>15320.2</u>	PRS 2 G	4044211047115	1 ST



Pre-assembled relay module PRS..., Screw connection, Consisting of: relay socket base, power contact relay, pluggable display/suppression module and holding clip, 2 CO contacts, Input voltage: 230 VAC

Article number	Article name	GTIN (EAN)	Packaging unit
<u>15812.2</u>	PRSU 2G/230V AC Var.	4044211146511	1 ST



Pre-assembled relay module PRS..., Tension-spring connection, Consisting of: relay socket base, power contact relay, pluggable display/suppression module and holding clip, 2 CO contact, Input voltage: 230 VAC

Article number	Article name	GTIN (EAN)	Packaging unit
<u>15797.2</u>	PRSU 2Z/230V AC	4044211135416	1 ST



Pre-assembled relay module PRS..., Screw connection, Consisting of: relay socket base, power contact relay, pluggable display/suppression module and holding clip, 2 CO contacts, Input voltage: 230 VAC

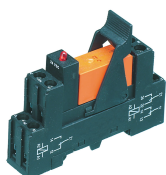
Article number	Article name	GTIN (EAN)	Packaging unit
<u>15236.2</u>	PRSU 2G/230V AC	4044211046743	10 ST

##INVERSE##CONTA-ELECTRONICS



Pre-assembled relay module PRS..., Screw connection, Consisting of: relay socket base, power contact relay, pluggable display/suppression module and holding clip, 2 CO contacts, Input voltage: 230 VAC

Article number	Article name	GTIN (EAN)	Packaging unit
<u>15812.2</u>	PRSU 2G/230V AC Var.	4044211146511	1 ST



Pre-assembled relay module PRS..., Screw connection, Consisting of: relay socket base, power contact relay, pluggable display/suppression module and holding clip, 2 CO contacts, Input voltage: 230 VAC

Article number	Article name	GTIN (EAN)	Packaging unit
<u>15172.2</u>	PRSU 2/230V AC	4044211046491	10 ST



Relay socket base PRS, for miniature power relay with 2 CO contacts, Push-in connection, Plug-in option for input/suppression modules and cross connections, Mounting type: Mounting rail TS 35

Article number	Article name	GTIN (EAN)	Packaging unit
<u>16503.2</u>	PPRS 2	4044211236298	20 ST