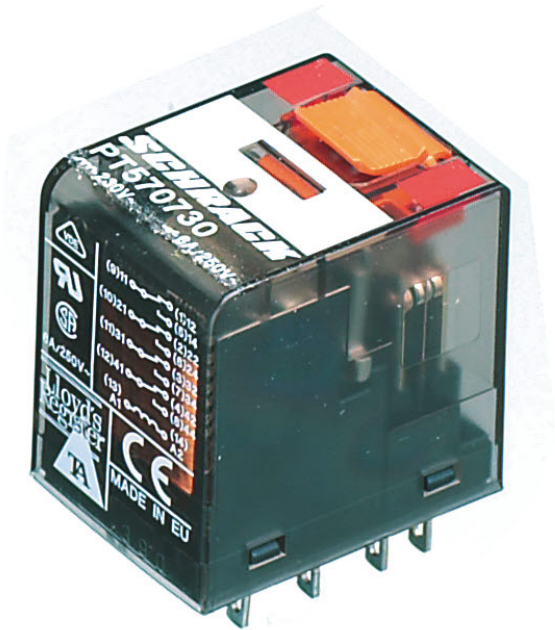


# Data sheet

## 6487.2 PRS 4/24V DC



Plug-in industrial relays with power contacts, 4 CO contacts, Test button, Mechanical switching position indicator, Polarity A1+, A2-, Input voltage: 24 VDC

### Business data

Article number	6487.2
Article name	PRS 4/24V DC
GTIN (EAN)	4044211074258
Packaging unit	1
Quantity unit	PC
Weight per piece (not including packaging)	28.3 g
Weight per piece (including packaging)	30.47 g
Unit of weight	G
Customs number	85364900
Country of origin	AT
Product description	Relay, opened design

### Technical data

#### Dimensions

Length	28 mm
Width	22.5 mm
Height	29 mm

#### Ratings

Overvoltage category	III
Contamination degree	2

#### Input data

Working voltage	>18,0 VDC -
Drop-out voltage	2,4 VDC
Coil voltage	24 VDC -
Power consumption	0,741 W
Coil resistance	777 Ohm

#### Output data

Switching voltage / switching voltage max.	240 / 240 VAC
Continuous current max. / Inrush current max.	6 / 12 A
Contact configuration	4 CO contacts
Switching capacity, max.	1500 VA
Electrical lifespan (AC1)	1,5x10 <sup>5</sup> (@ 6 A)
Mechanical lifespan	30x10 <sup>6</sup>
Contact load, min.	120 mW
Bounce time at close of the NO/NC contact	6/8 ms

#### Materials

Contact material	AgNi 90/10
Working temperature, min.	-40 °C
Working temperature, max.	70 °C

# Data sheet

## 6487.2 PRS 4/24V DC



### Technical data

#### Further technical data

Degree of protection	RTII (flux proof)
Insulation voltage coil/contact	2,5 kV
Response/release time	10 / 18 ms
Insulation voltage contact/contact	1,2 kV
Mechanical indicator	✓
Test button	✓
Vibration resistance NO/NC	7/4 g
Shock resistance NO/NC	20/5 g
Pinning	2,8 (AMP) mm

#### Environmental Product Compliance

REACH Conform	yes
REACH Reference date	2023-06-14
REACH Candidate Substance Note	No
RoHS Conform	yes

# Data sheet

## 6487.2 PRS 4/24V DC



---

### Approvals

---

#### Standards and regulations

---

CE compliant	yes
--------------	-----

---

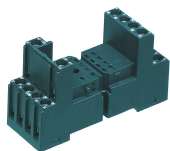
---

**Media**

---

### Accessories

#### ##INVERSE##CONTA-ELECTRONICS



Relay socket base PRS, for industrial relay with 4 CO contacts, Screw connection, Plug-in option for input/suppression modules, Mounting type: Mounting rail TS 35

Article number	Article name	GTIN (EAN)	Packaging unit
<u>15137.2</u>	PRS 4	4044211046200	1 ST



Relay socket base PRS, for industrial relay with 4 CO contacts, Screw connection, Plug-in option for input/suppression modules, Mounting type: Mounting rail TS 35

Article number	Article name	GTIN (EAN)	Packaging unit
<u>15324.2</u>	PRS 4 G	4044211047139	1 ST



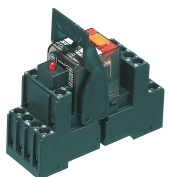
Relay socket base PRS, for industrial relay with 4 CO contacts, Tension-spring connection, Plug-in option for input/suppression modules, Mounting type: Mounting rail TS 35

Article number	Article name	GTIN (EAN)	Packaging unit
<u>15431.2</u>	PRS 4 Z	4044211121488	1 ST



Pre-assembled relay module PRS..., Tension-spring connection, Consisting of: relay socket base, power contact relay, pluggable display/suppression module and holding clip, 4 CO contact, Input voltage: 24 VDC

Article number	Article name	GTIN (EAN)	Packaging unit
<u>15799.2</u>	PRSU 4Z/24V DC	4044211135430	10 ST



Pre-assembled relay module PRS..., Screw connection, Consisting of: relay socket base, power contact relay, pluggable display/suppression module and holding clip, 4 CO contacts, Input voltage: 24 VDC

Article number	Article name	GTIN (EAN)	Packaging unit
<u>15173.2</u>	PRSU 4/24V DC	4044211046507	10 ST

##INVERSE##CONTA-ELECTRONICS



Pre-assembled relay module PRS..., Screw connection, Consisting of: relay socket base, power contact relay, pluggable display/suppression module and holding clip, 4 CO contacts, Input voltage: 24 VDC

Article number	Article name	GTIN (EAN)	Packaging unit
<u>15332.2</u>	PRSU 4G/24V DC	4044211080723	10 ST



Relay socket base PRS, for industrial relay with 4 CO contacts, Push-in connection, Plug-in option for input/suppression modules and cross connections, Mounting type: Mounting rail TS 35

Article number	Article name	GTIN (EAN)	Packaging unit
<u>16504.2</u>	PPRS 4	4044211236250	10 ST