

Plug-in industrial relays with power contacts, 4 CO contacts, Test button, Mechanical switching position indicator, Input voltage: 230 VAC

Business data

| | |
|--|----------------------|
| Article number | <u>6489.2</u> |
| Article name | PRS 4/230V AC |
| GTIN (EAN) | 4044211074272 |
| Packaging unit | 1 |
| Quantity unit | PC |
| Weight per piece (not including packaging) | 27.8 g |
| Weight per piece (including packaging) | 29.94 g |
| Unit of weight | G |
| Customs number | 85364900 |
| Country of origin | AT |
| Product description | Relay, opened design |

Technical data

Dimensions

| | |
|--------|---------|
| Length | 28 mm |
| Width | 22.5 mm |
| Height | 29 mm |

Ratings

| | |
|----------------------|-----|
| Overvoltage category | III |
| Contamination degree | 2 |

Input data

| | |
|-------------------|--------------|
| Working voltage | >184,0 VAC - |
| Drop-out voltage | 69,0 VAC |
| Coil voltage | 230 VAC - |
| Power consumption | 0,9 W |
| Coil resistance | 19465 Ohm |

Output data

| | |
|---|--------------------|
| Switching voltage / switching voltage max. | 240 / 240 VAC |
| Continuous current max. / Inrush current max. | 6 / 12 A |
| Contact configuration | 4 CO contacts |
| Switching capacity, max. | 1500 VA |
| Mechanical lifespan | 20x10 ⁶ |
| Contact load, min. | 120 mW |
| Bounce time at close of the NO/NC contact | 6/8 ms |

Materials

| | |
|---------------------------|------------|
| Contact material | AgNi 90/10 |
| Working temperature, min. | -40 °C |
| Working temperature, max. | 70 °C |

Further technical data

| | |
|------------------------------------|-------------------|
| Degree of protection | RTII (flux proof) |
| Insulation voltage coil/contact | 2,5 kV |
| Insulation voltage contact/contact | 1,2 kV |
| Mechanical indicator | ✓ |
| Test button | ✓ |
| Vibration resistance NO/NC | 7/4 g |
| Shock resistance NO/NC | 20/5 g |
| Pinning | 2,8 (AMP) mm |

Technical data

Environmental Product Compliance

| | |
|--------------------------------|------------|
| REACH Conform | yes |
| REACH Reference date | 2024-01-23 |
| REACH Candidate Substance Note | No |
| RoHS Conform | yes |

Data sheet

6489.2 PRS 4/230V AC



Approvals

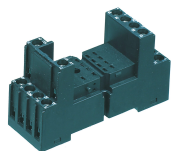
Standards and regulations

| | |
|--------------|-----|
| CE compliant | yes |
|--------------|-----|

Media

Accessories

##INVERSE##CONTA-ELECTRONICS



Relay socket base PRS, for industrial relay with 4 CO contacts, Screw connection, Plug-in option for input/suppression modules, Mounting type: Mounting rail TS 35

| Article number | Article name | GTIN (EAN) | Packaging unit |
|-------------------------|--------------|---------------|----------------|
| 15137.2 | PRS 4 | 4044211046200 | 1 ST |



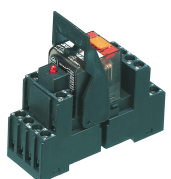
Pre-assembled relay module PRS..., Screw connection, Consisting of: relay socket base, power contact relay, pluggable display/suppression module and holding clip, 4 CO contacts, Input voltage: 230 VAC

| Article number | Article name | GTIN (EAN) | Packaging unit |
|-------------------------|-----------------|---------------|----------------|
| 15372.2 | PRSU 4G/230V AC | 4044211080730 | 10 ST |



Relay socket base PRS, for industrial relay with 4 CO contacts, Tension-spring connection, Plug-in option for input/suppression modules, Mounting type: Mounting rail TS 35

| Article number | Article name | GTIN (EAN) | Packaging unit |
|-------------------------|--------------|---------------|----------------|
| 15431.2 | PRS 4 Z | 4044211121488 | 1 ST |



Pre-assembled relay module PRS..., Screw connection, Consisting of: relay socket base, power contact relay, pluggable display/suppression module and holding clip, 4 CO contacts, Input voltage: 230 VAC

| Article number | Article name | GTIN (EAN) | Packaging unit |
|-------------------------|----------------|---------------|----------------|
| 15174.2 | PRSU 4/230V AC | 4044211046514 | 10 ST |



Pre-assembled relay module PRS..., Tension-spring connection, Consisting of: relay socket base, power contact relay, pluggable display/suppression module and holding clip, 4 CO contact, Input voltage: 230 VAC

| Article number | Article name | GTIN (EAN) | Packaging unit |
|-------------------------|-----------------|---------------|----------------|
| 15807.2 | PRSU 4Z/230V AC | 4044211135515 | 1 ST |

##INVERSE##CONTA-ELECTRONICS



Pre-assembled relay module PRS..., Screw connection, Consisting of: relay socket base, power contact relay, pluggable display/suppression module and holding clip, 4 CO contacts, Input voltage: 230 VAC

| Article number | Article name | GTIN (EAN) | Packaging unit |
|----------------|-----------------|---------------|----------------|
| <u>15372.2</u> | PRSU 4G/230V AC | 4044211080730 | 10 ST |



Relay socket base PRS, for industrial relay with 4 CO contacts, Push-in connection, Plug-in option for input/suppression modules and cross connections, Mounting type: Mounting rail TS 35

| Article number | Article name | GTIN (EAN) | Packaging unit |
|----------------|--------------|---------------|----------------|
| <u>16504.2</u> | PPRS 4 | 4044211236250 | 10 ST |