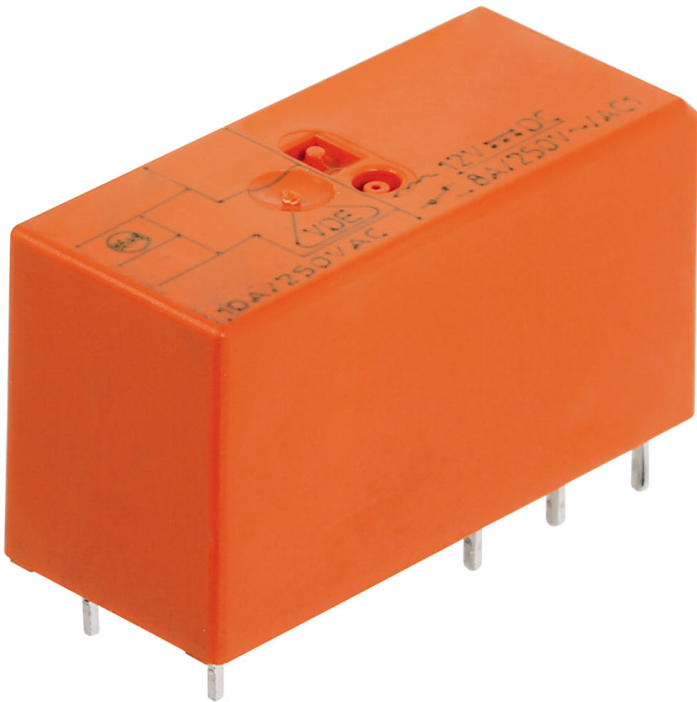


Data sheet

6940.0 PRS 1L/24V DC



Plug-in miniature power relay, Encapsulated design with power contact, 1 CO contact, Input voltage: 24 VDC

Business data

Article number	6940.0
Article name	PRS 1L/24V DC
GTIN (EAN)	4044211076658
Packaging unit	1
Quantity unit	PC
Weight per piece (not including packaging)	13 g
Weight per piece (including packaging)	14.84 g
Unit of weight	G
Customs number	85364900
Country of origin	AT
Product description	Relay, encapsulated construction

Data sheet

6940.0 PRS 1L/24V DC

Technical data

Dimensions

Length	29 mm
Width	12.7 mm
Height	15.7 mm

Ratings

Overvoltage category	III
Contamination degree	3

Input data

Working voltage	>16,8 VDC -
Drop-out voltage	2,4 VDC
Coil voltage	24 VDC -
Power consumption	0,4 W
Coil resistance	1440 Ohm

Output data

Switching voltage / switching voltage max.	250 / 400 VAC
Continuous current max. / Inrush current max.	16 / 80 A
Contact configuration	1 CO contact
Switching capacity, max.	4000 VA
Mechanical lifespan	30x10 ⁶
Bounce time at close of the NO/NC contact	3/6 ms

Materials

Contact material	AgSnO ₂
Working temperature, min.	-40 °C
Working temperature, max.	85 °C

Further technical data

Degree of protection	RTII
Insulation voltage coil/contact	5 kV
Response/release time	8 / 6 ms
Insulation voltage contact/contact	1 kV
Vibration resistance NO/NC	20/5 g
Pinning	5 mm

Data sheet

6940.0 PRS 1L/24V DC



Technical data

Environmental Product Compliance

REACH Conform	yes
REACH Reference date	2023-06-14
REACH Candidate Substance Note	No
RoHS Conform	yes

Data sheet

6940.0 PRS 1L/24V DC



Approvals

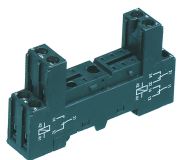
Standards and regulations

CE compliant	yes
--------------	-----

Media

Accessories

##INVERSE##CONTA-ELECTRONICS



Relay socket base PRS, for miniature power relay with 2 CO contacts, Screw connection, Plug-in option for input/suppression modules, Mounting type: Mounting rail TS 35

Article number	Article name	GTIN (EAN)	Packaging unit
<u>15136.2</u>	PRS 2	4044211046194	1 ST



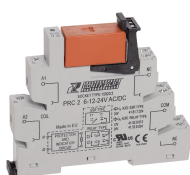
Relay socket base PRS, for miniature power relay with 2 CO contacts, Screw connection, Plug-in option for input/suppression modules, Mounting type: Mounting rail TS 35

Article number	Article name	GTIN (EAN)	Packaging unit
<u>15320.2</u>	PRS 2 G	4044211047115	1 ST



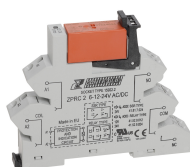
Relay socket base PRS, for miniature power relay with 2 CO contacts, Tension-spring connection, Plug-in option for input/suppression modules, Mounting type: Mounting rail TS 35

Article number	Article name	GTIN (EAN)	Packaging unit
<u>15789.2</u>	PRS 2 Z	4044211135256	1 ST



Plug-Relay-Compact (PRC) socket base PRC with screw connection, Mounting type: Mounting rail TS 35, 2 CO contact, Input voltage: 6.12 or 24 VAC/DC

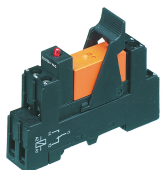
Article number	Article name	GTIN (EAN)	Packaging unit
<u>15920.2</u>	PRC 2 6-12-24V AC/DC	4044211137359	10 ST



Plug-Relay-Compact (PRC) socket base PRC with tension-spring connection, Mounting type: Mounting rail TS 35, 2 CO contact, Input voltage: 6, 12 or 24 VAC/DC

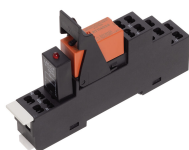
Article number	Article name	GTIN (EAN)	Packaging unit
<u>15922.2</u>	ZPRC 2 6-12-24V AC/DC	4044211137373	10 ST

##INVERSE##CONTA-ELECTRONICS



Pre-assembled relay module PRS..., Screw connection, Consisting of: relay socket base, power contact relay, pluggable display/suppression module and holding clip, 1 CO contact, Input voltage: 24 VDC

Article number	Article name	GTIN (EAN)	Packaging unit
<u>15419.2</u>	PRSU 1L/24V DC	4044211080761	1 ST



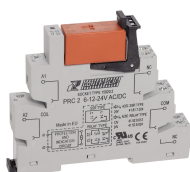
Pre-assembled relay module PRS..., Tension-spring connection, Consisting of: relay socket base, power contact relay, pluggable display/suppression module and holding clip, 1 CO contact, Input voltage: 24 VDC

Article number	Article name	GTIN (EAN)	Packaging unit
<u>15788.2</u>	PRSU 1LZ/24V DC	4044211135331	1 ST



Relay socket base PRS, for miniature power relay with 2 CO contacts, Push-in connection, Plug-in option for input/suppression modules and cross connections, Mounting type: Mounting rail TS 35

Article number	Article name	GTIN (EAN)	Packaging unit
<u>16503.2</u>	PPRS 2	4044211236298	20 ST



Plug-Relay-Compact (PRC) Complete, Consisting of base PRC... with screw connection and pluggable miniature relay PRS... with inrush power contact, Mounting type: Mounting rail TS 35, 1 CO contact, Input voltage: 24 VAC/DC

Article number	Article name	GTIN (EAN)	Packaging unit
<u>16058.2</u>	PRCU 1L/24V AC/DC	4044211149666	10 ST



Relay socket base PRS, for miniature power relay with 2 CO contacts, Push-in connection, Plug-in option for input/suppression modules and cross connections, Mounting type: Mounting rail TS 35

Article number	Article name	GTIN (EAN)	Packaging unit
<u>16503.2</u>	PPRS 2	4044211236298	20 ST