

CONTA-CABLE/ KES Cable Entries



KES-E

KES-E-R



EN



DE



KES-E



KES-E-R

CONTA-CABLE/ KDS-SR Kabeleinführungen



KES-E

KES-E-R



EN



DE



KES-E



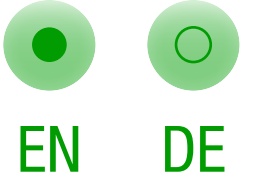
KES-E-R

CONTA-CABLE/ KES Cable Entries

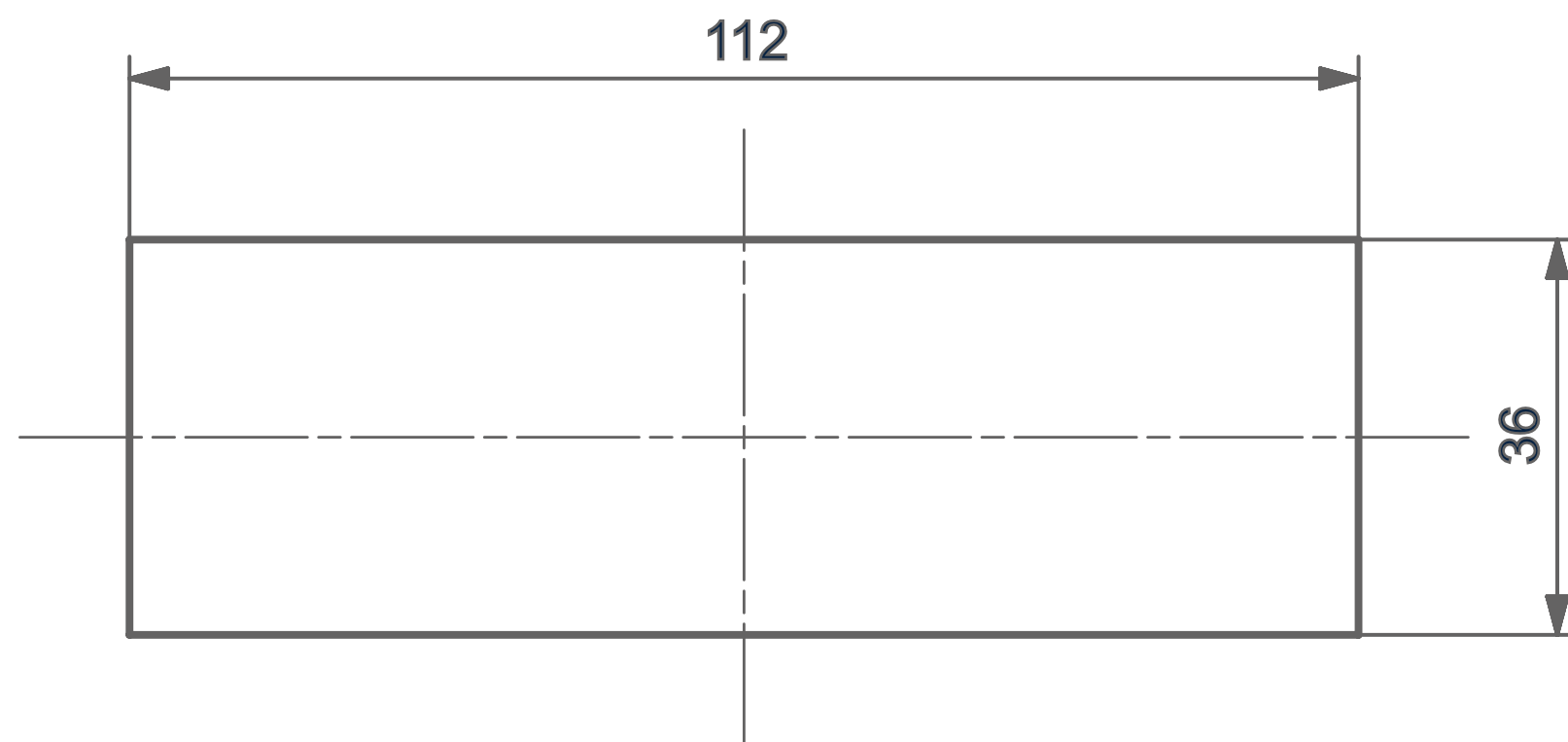


KES-E

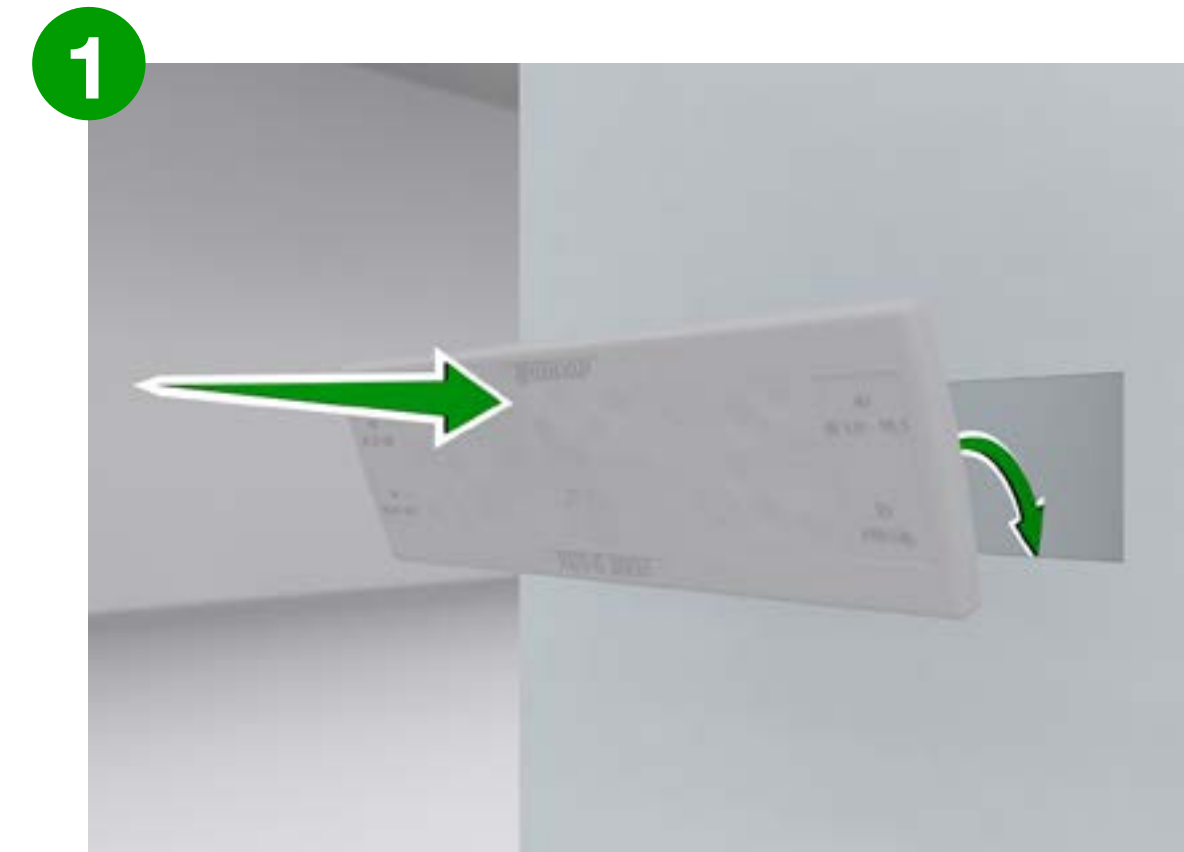
KES-E-R



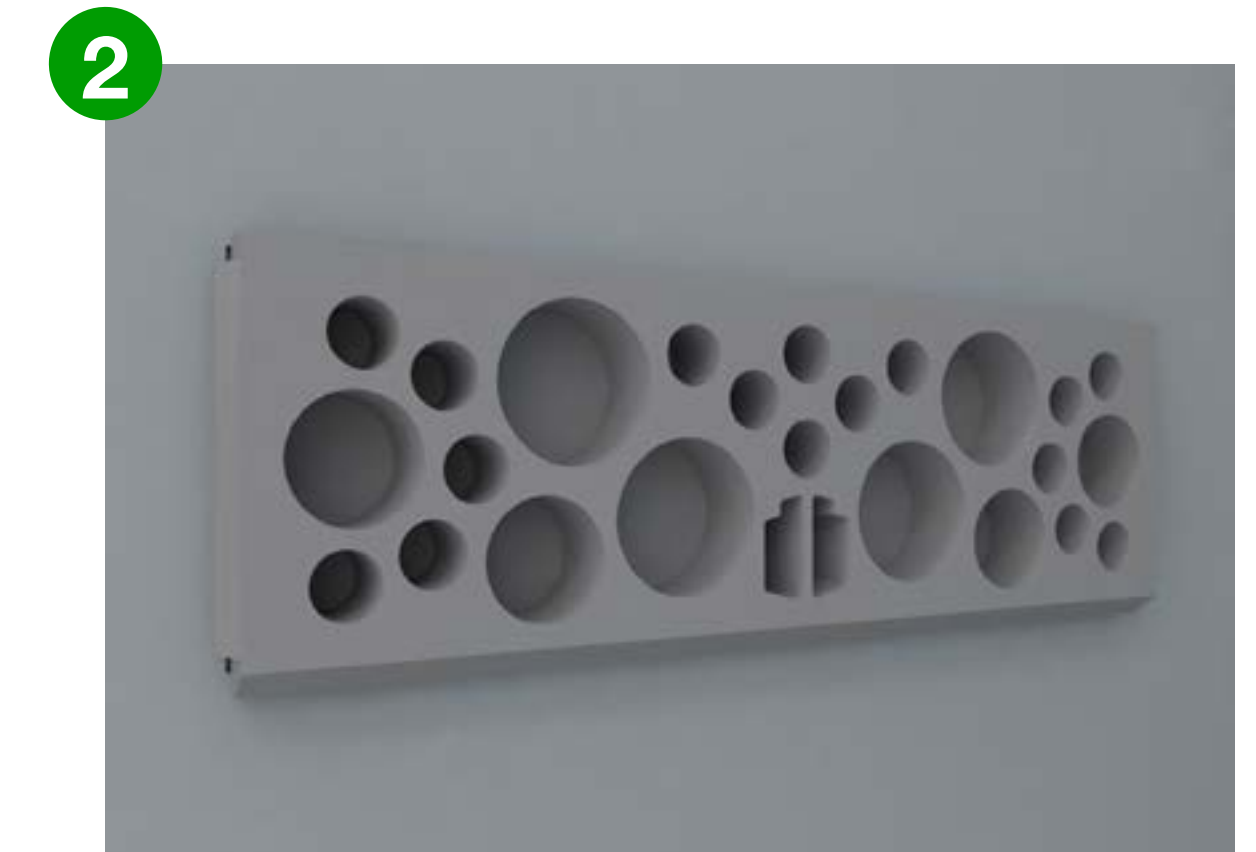
CUT-OUT DIMENSIONS



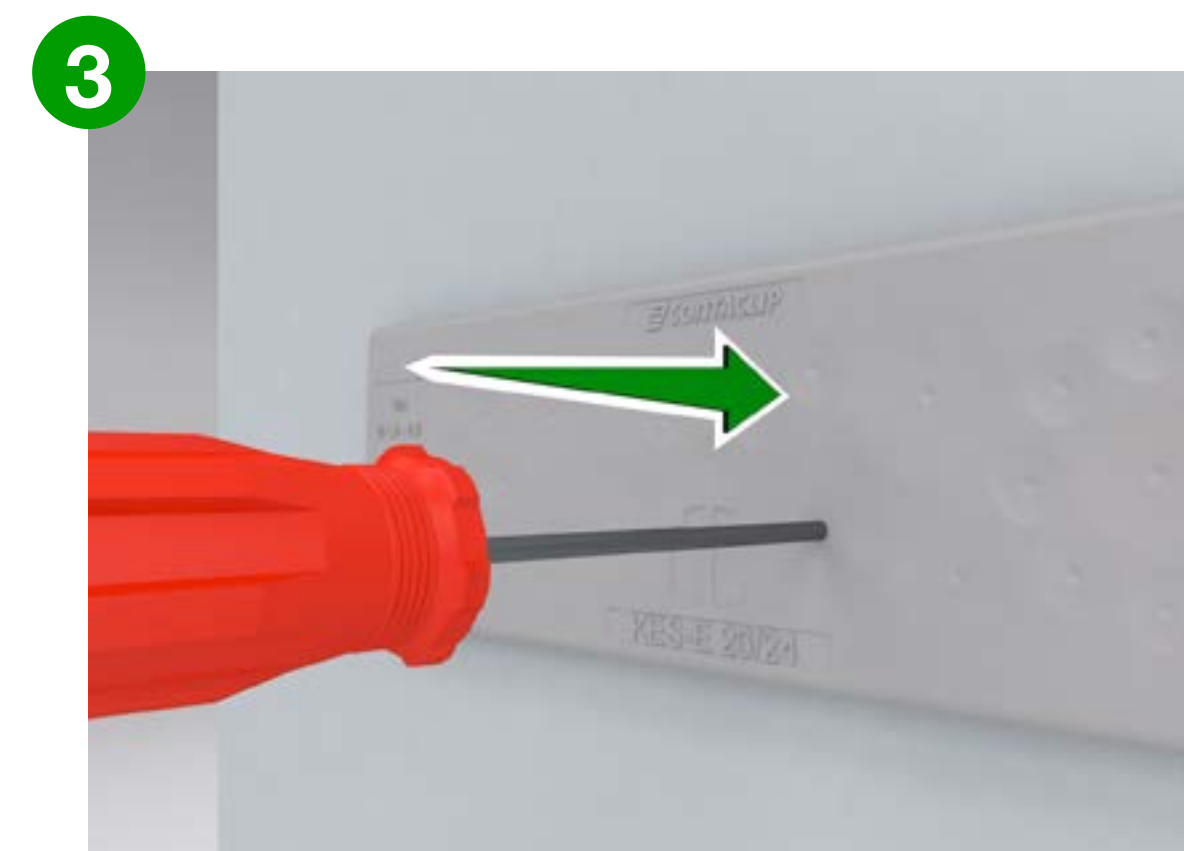
INSTALLATION



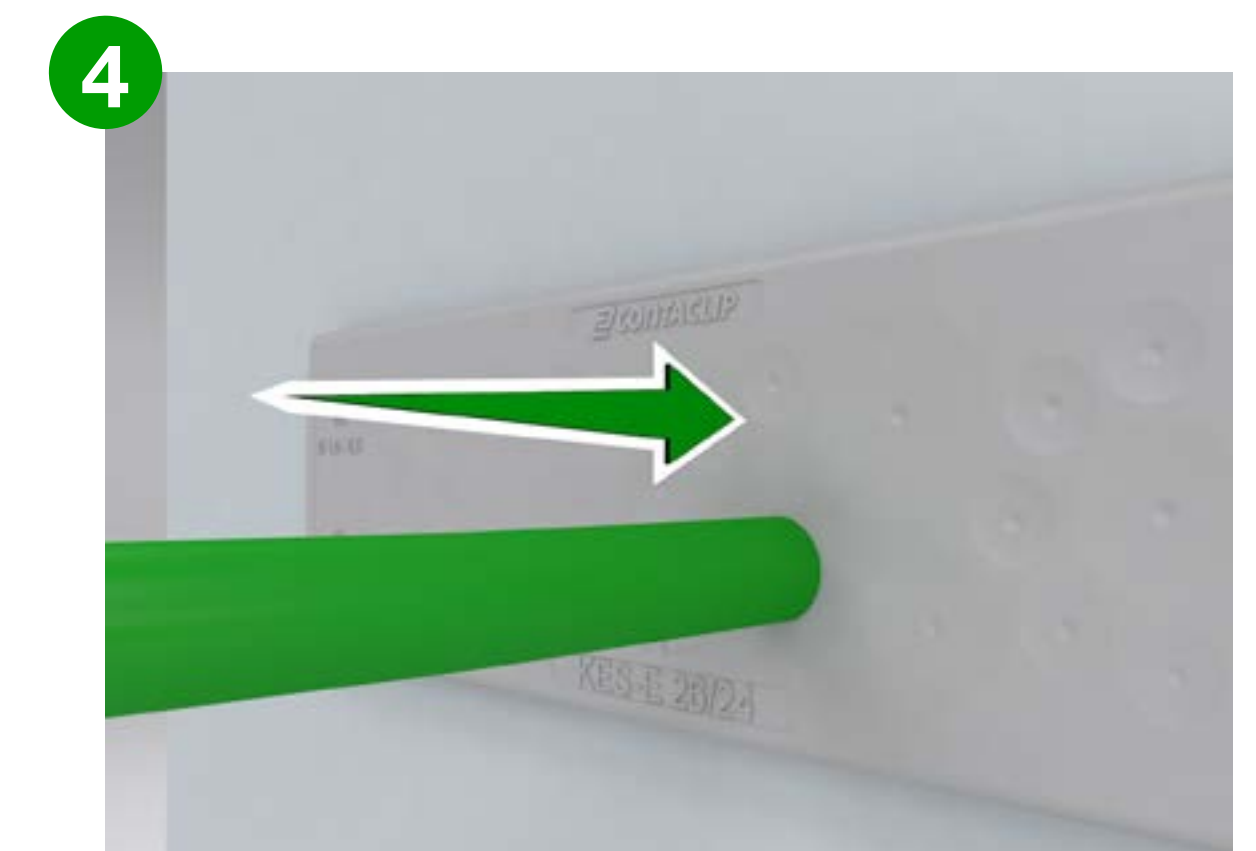
1 Place cable entry into cut-out.



2 Press in until all four sides snap into cut-out.



3 Pierce membrane at push-through point.



4 Push cables through from outside.

SHEET THICKNESS

Type	Thickness
A	1.5 – 2.5 mm
B	2.5 – 4 mm

CONTA-CABLE/ KES Cable Entries



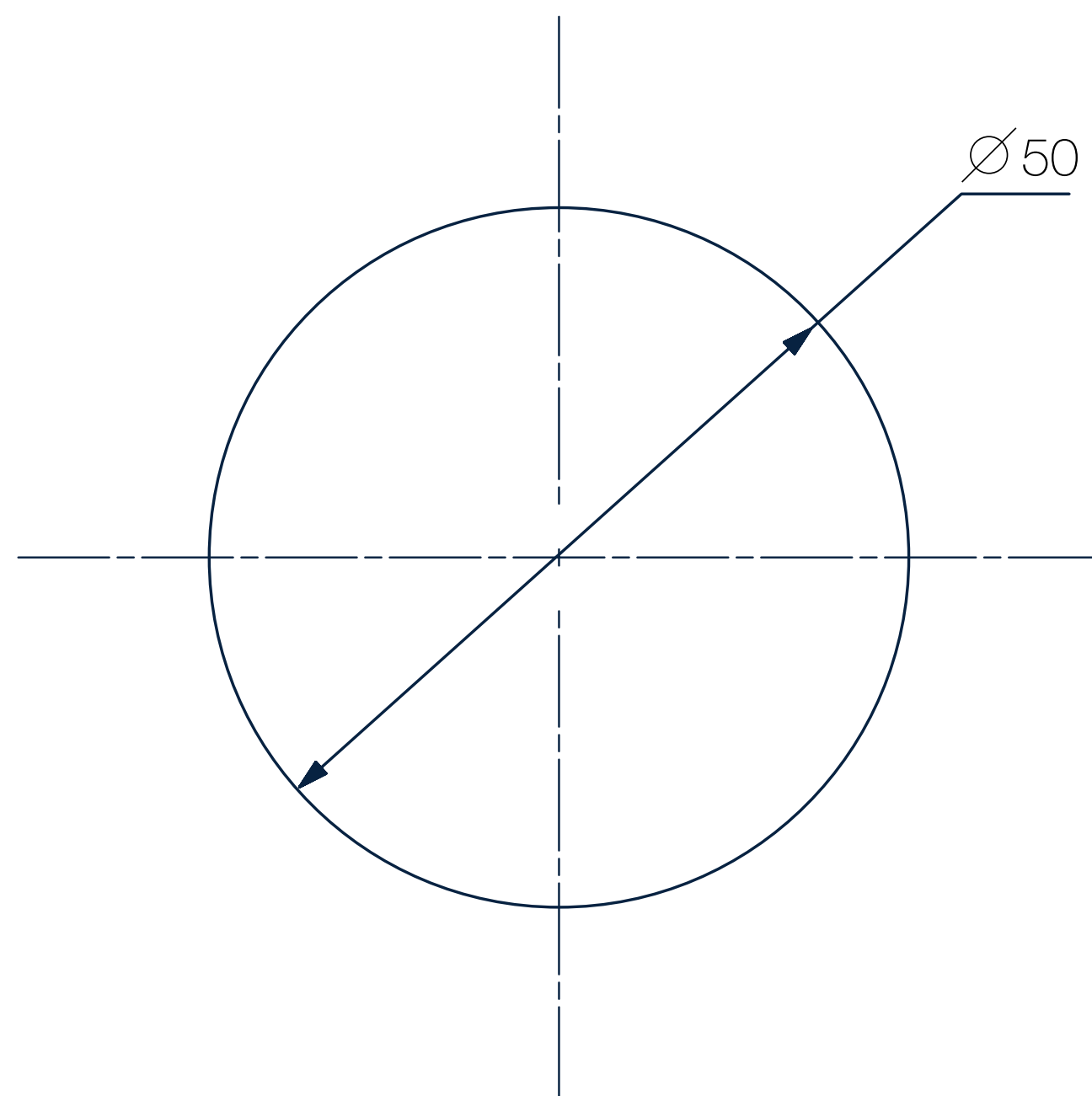
KES-E

KES-E-R

EN DE

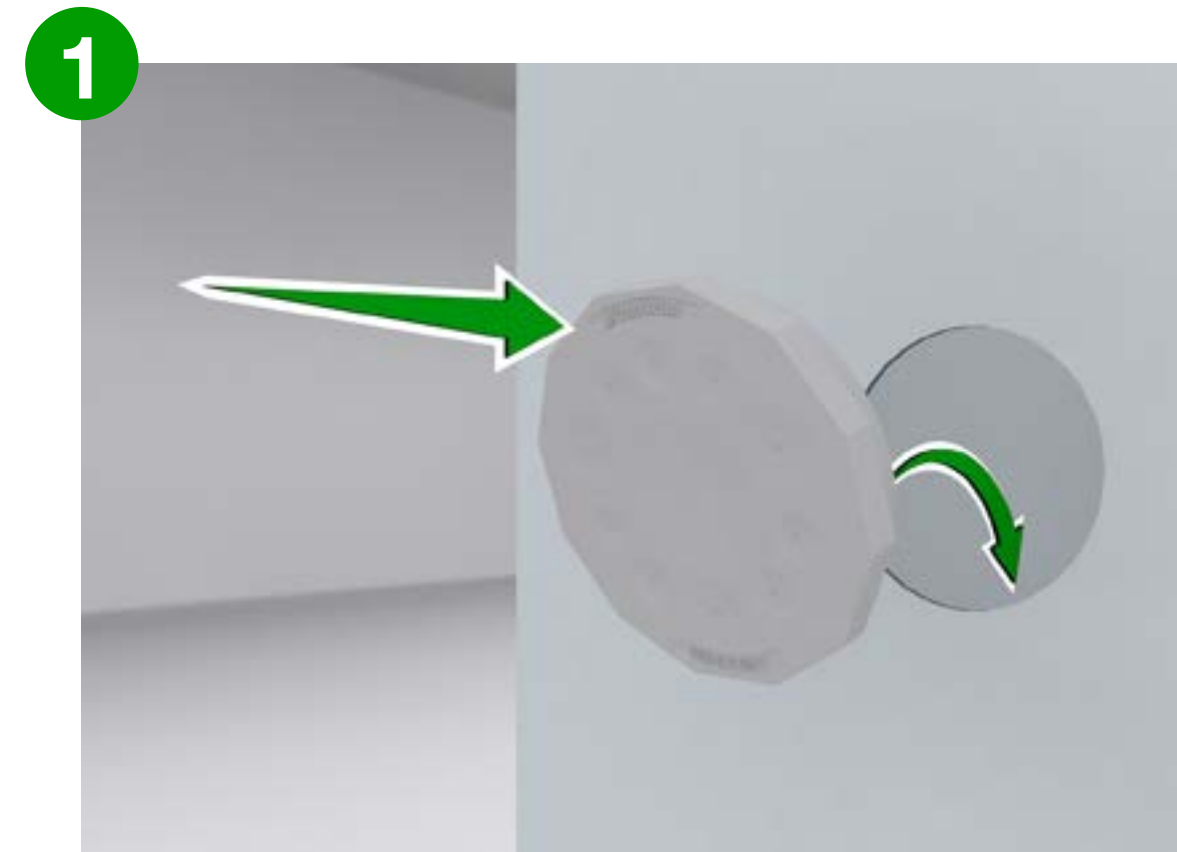
CUT-OUT DIMENSIONS

INSTALLATION

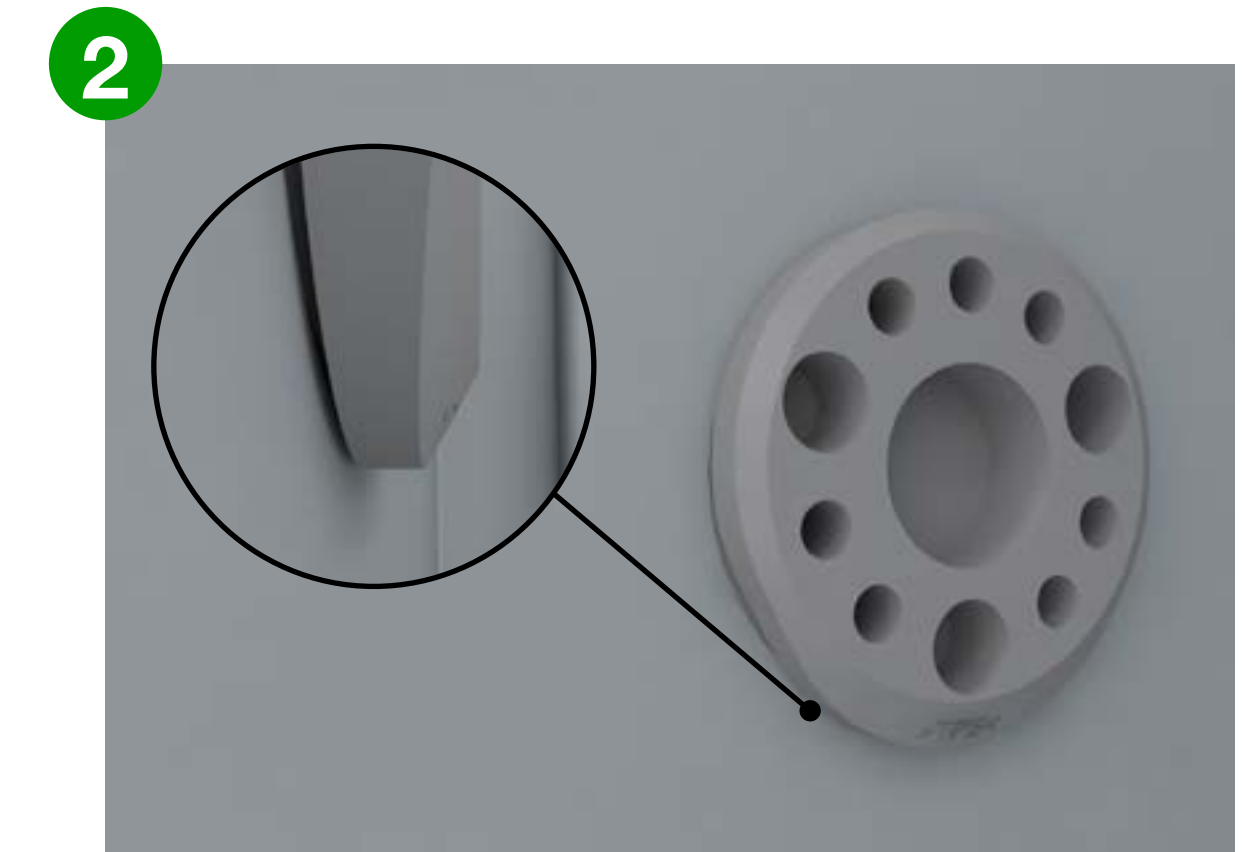


SHEET THICKNESS

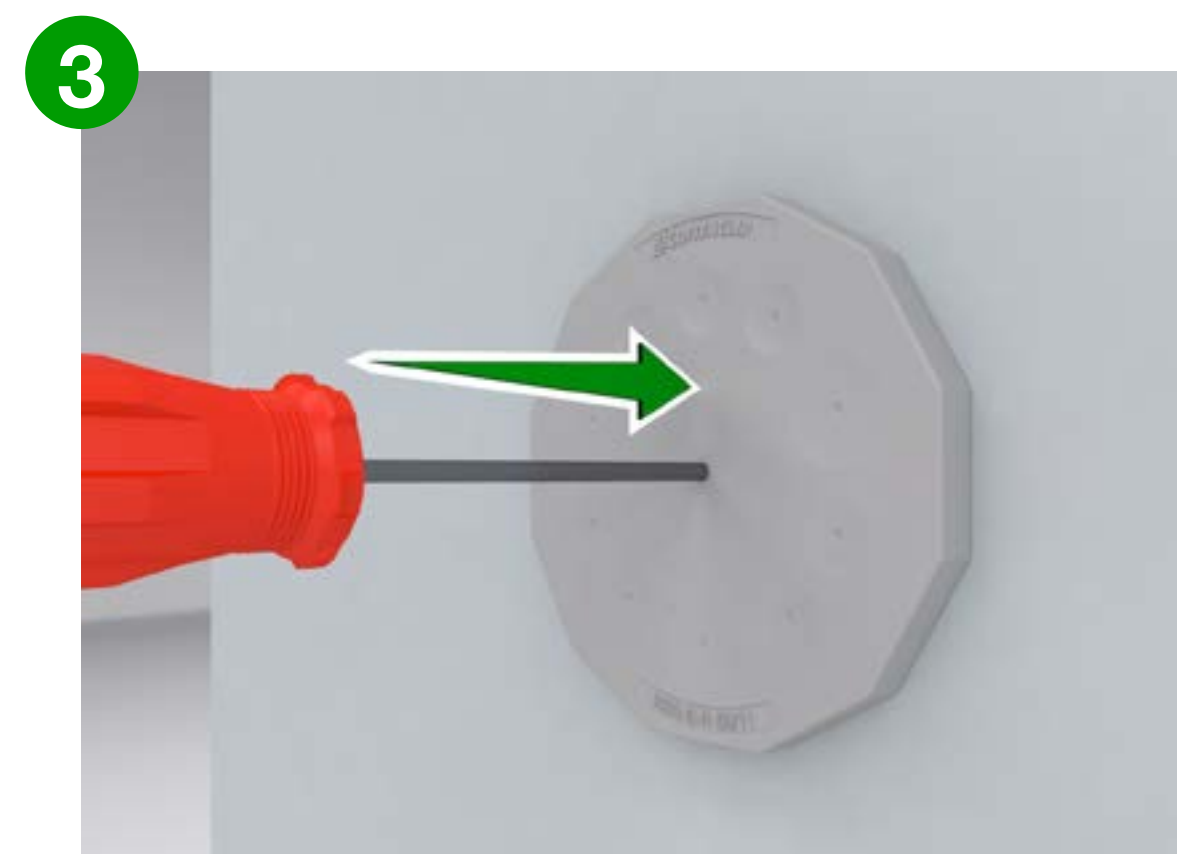
Type	Thickness
A	1.5 – 2.5 mm
B	2.5 – 4 mm



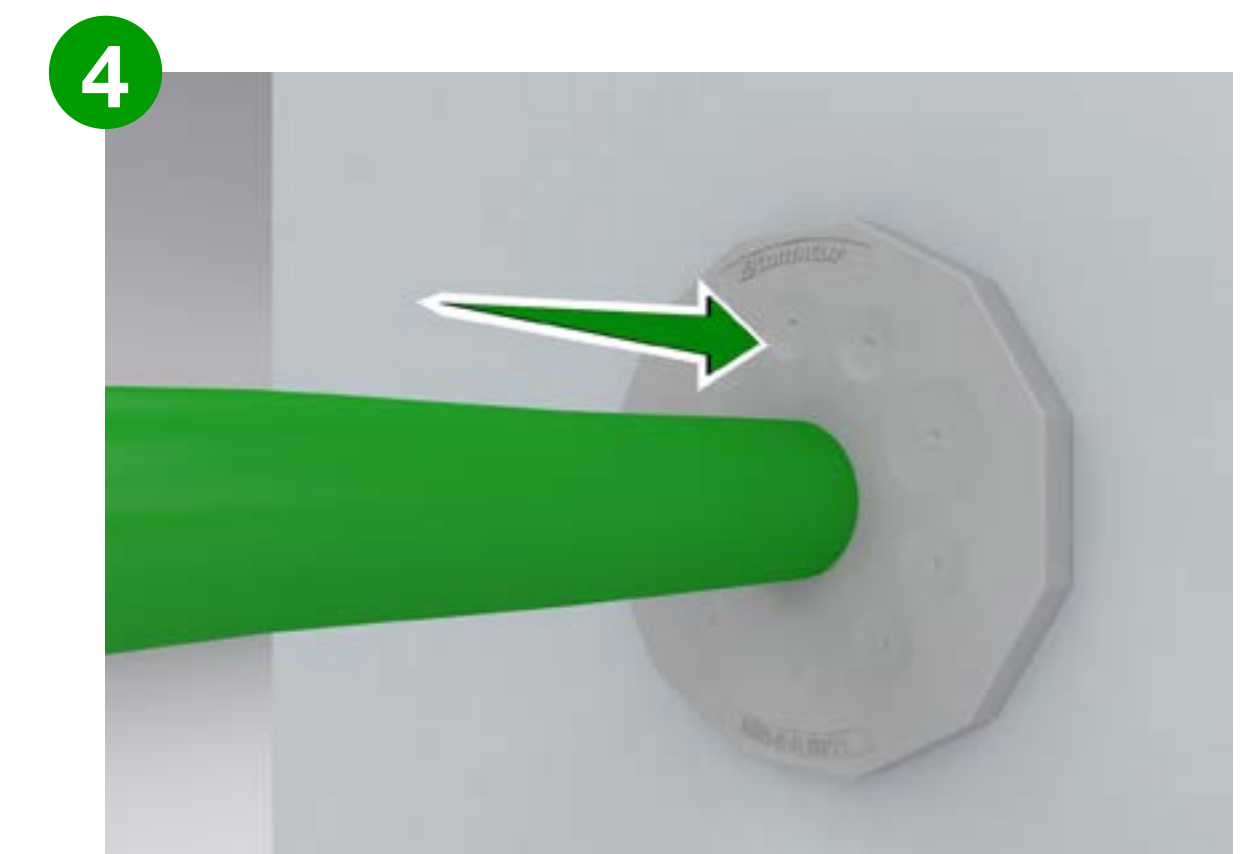
Place cable entry into cut-out.



Press to snap into cut-out.



Pierce membrane at push-through point.



Push cables through from outside.

CONTA-CABLE/ KDS Kabeleinführungen

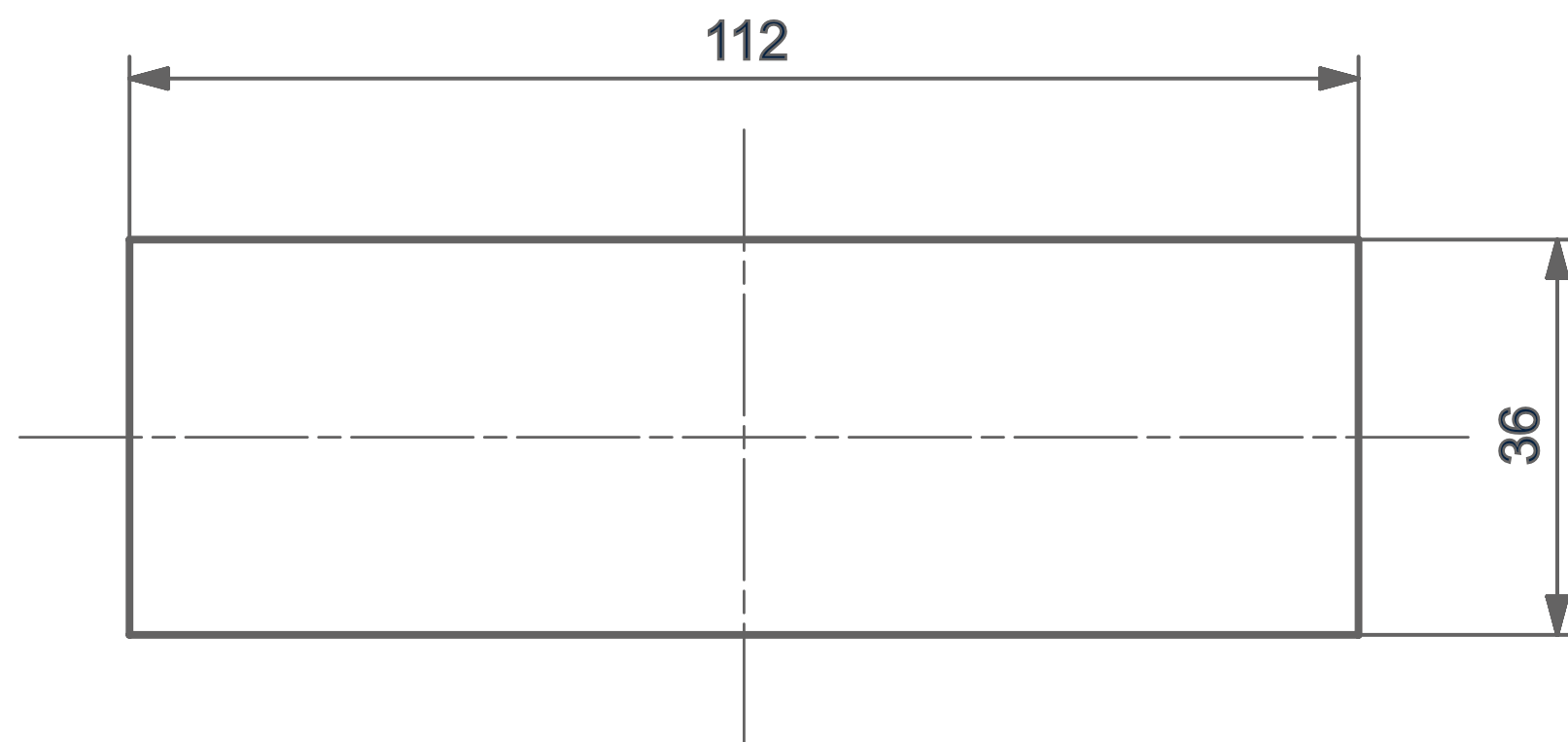


KES-E

KES-E-R

EN DE

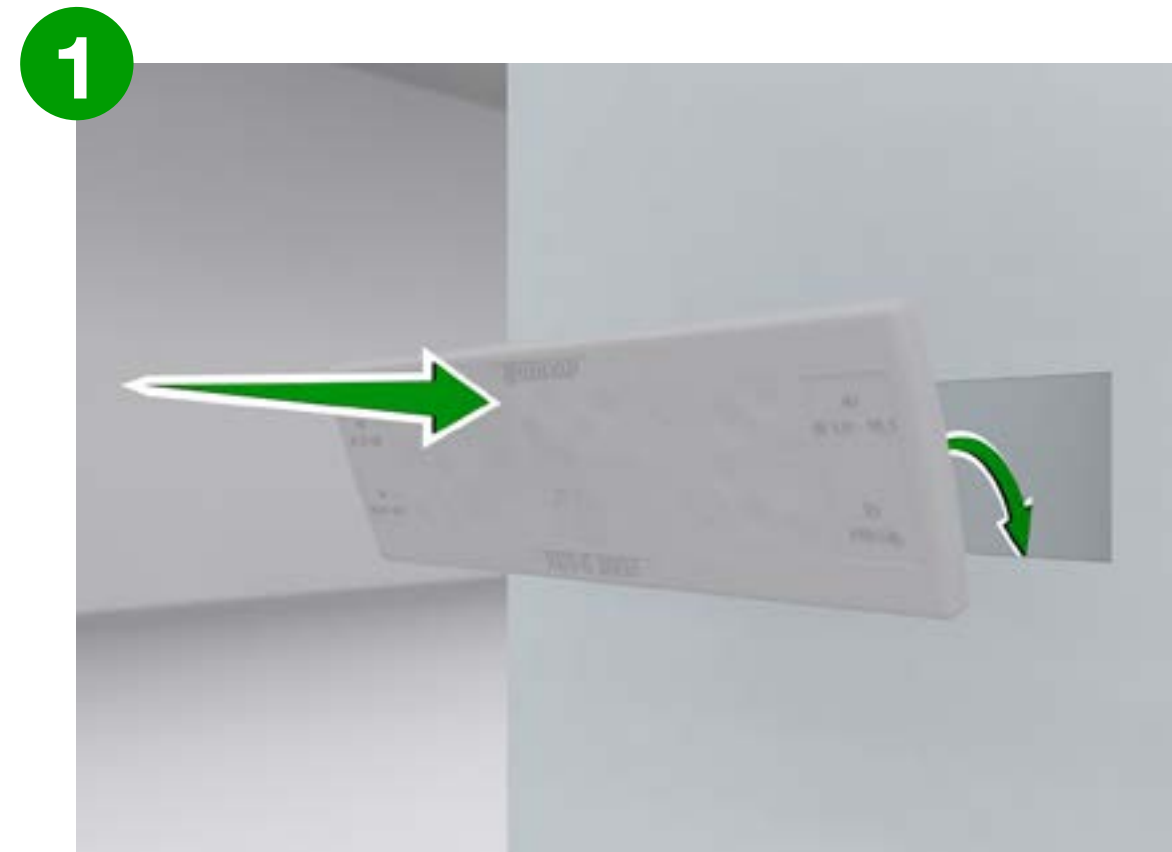
ABMESSUNGEN MONTAGEAUSSCHNITTE



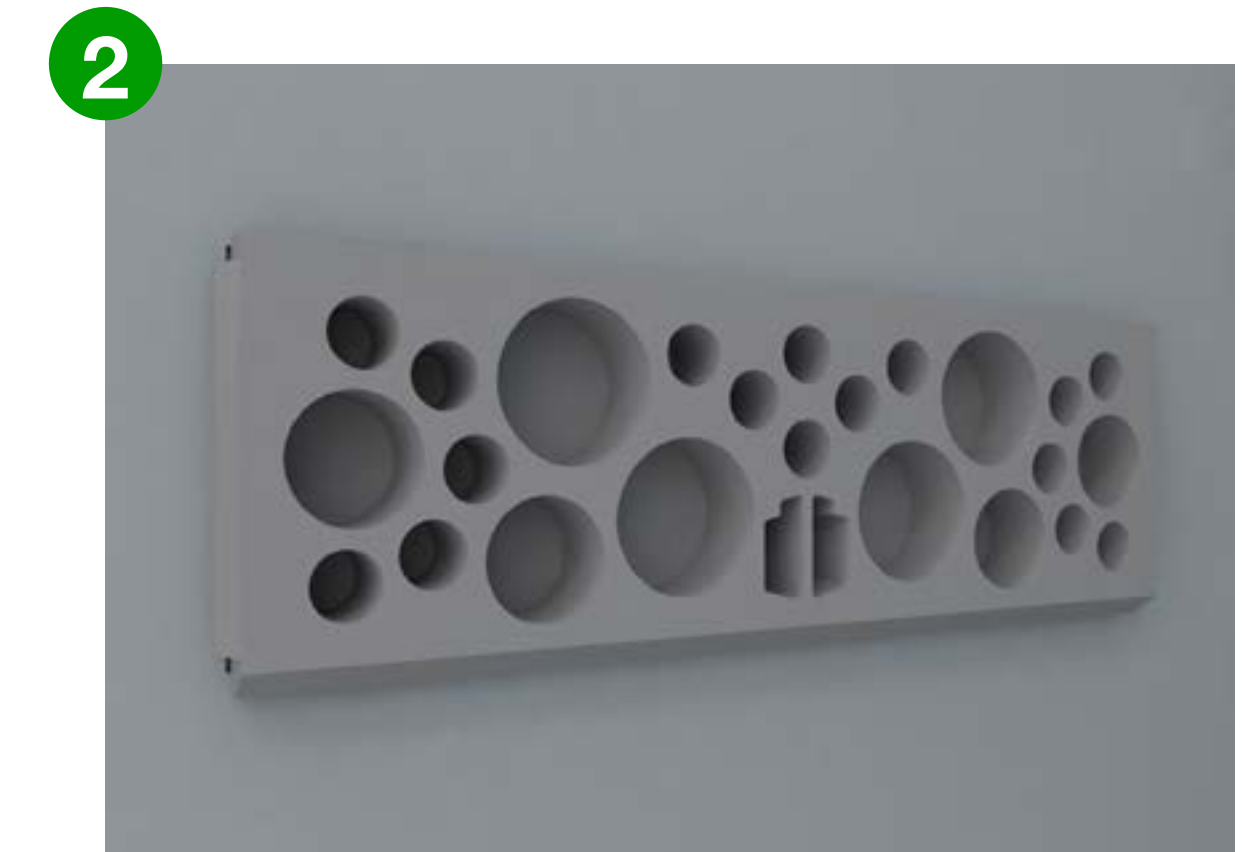
BLECHDICKE

Typ	Dicke
A	1,5 - 2,5 mm
B	2,5 - 4 mm

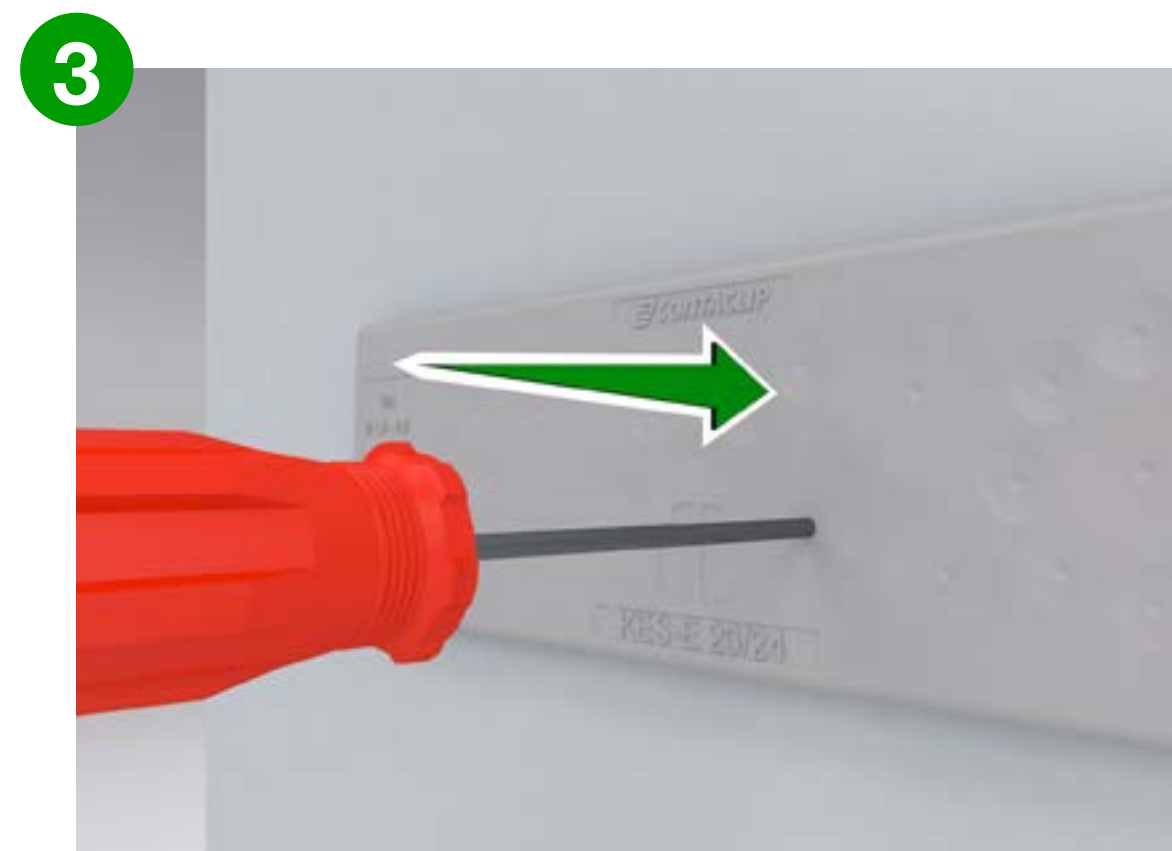
INSTALLATION



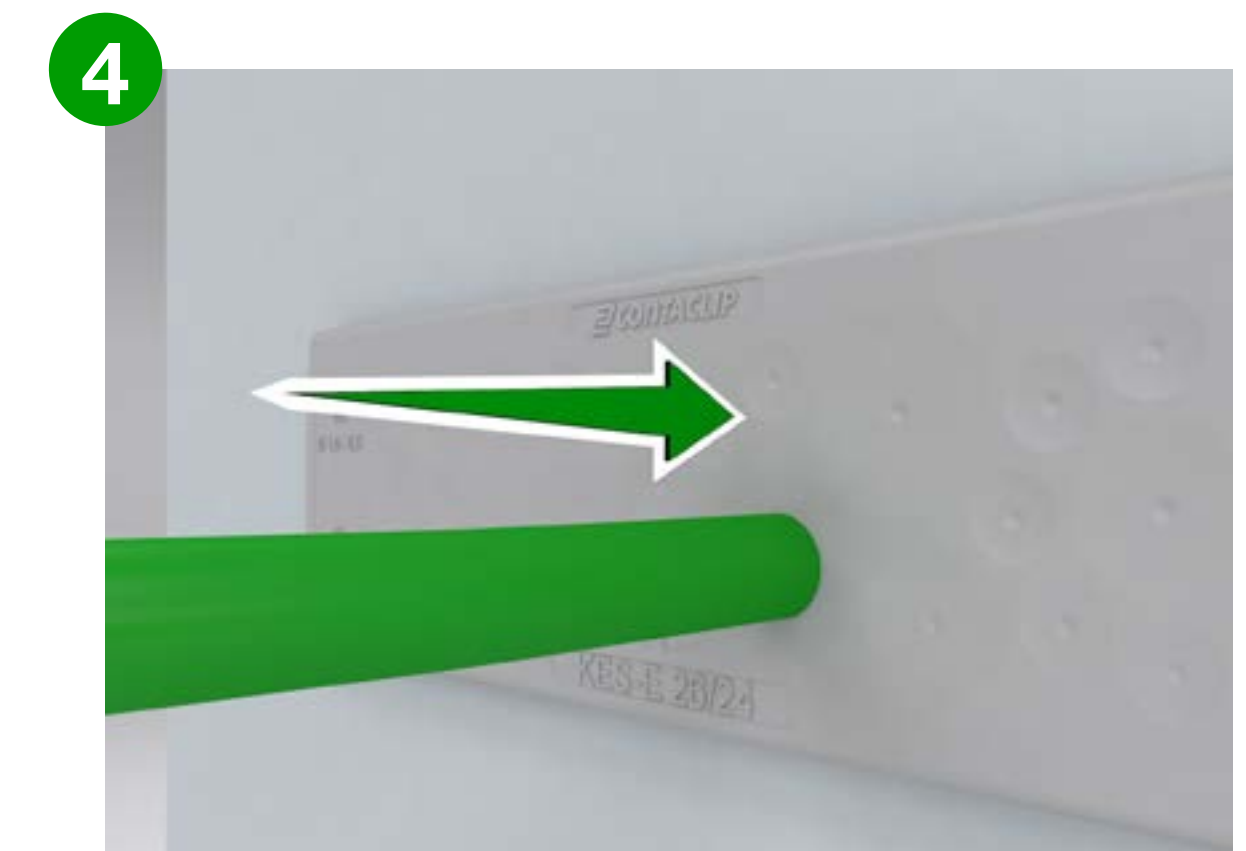
Die Kabeleinführung in den Ausschnitt legen.



Eindrücken, bis alle vier Seiten im Ausschnitt einrasten.



Die Membran an der Durchsteckstelle durchstechen.



Kabel von außen durchstecken.

CONTA-CABLE/ KDS Kabeleinführungen



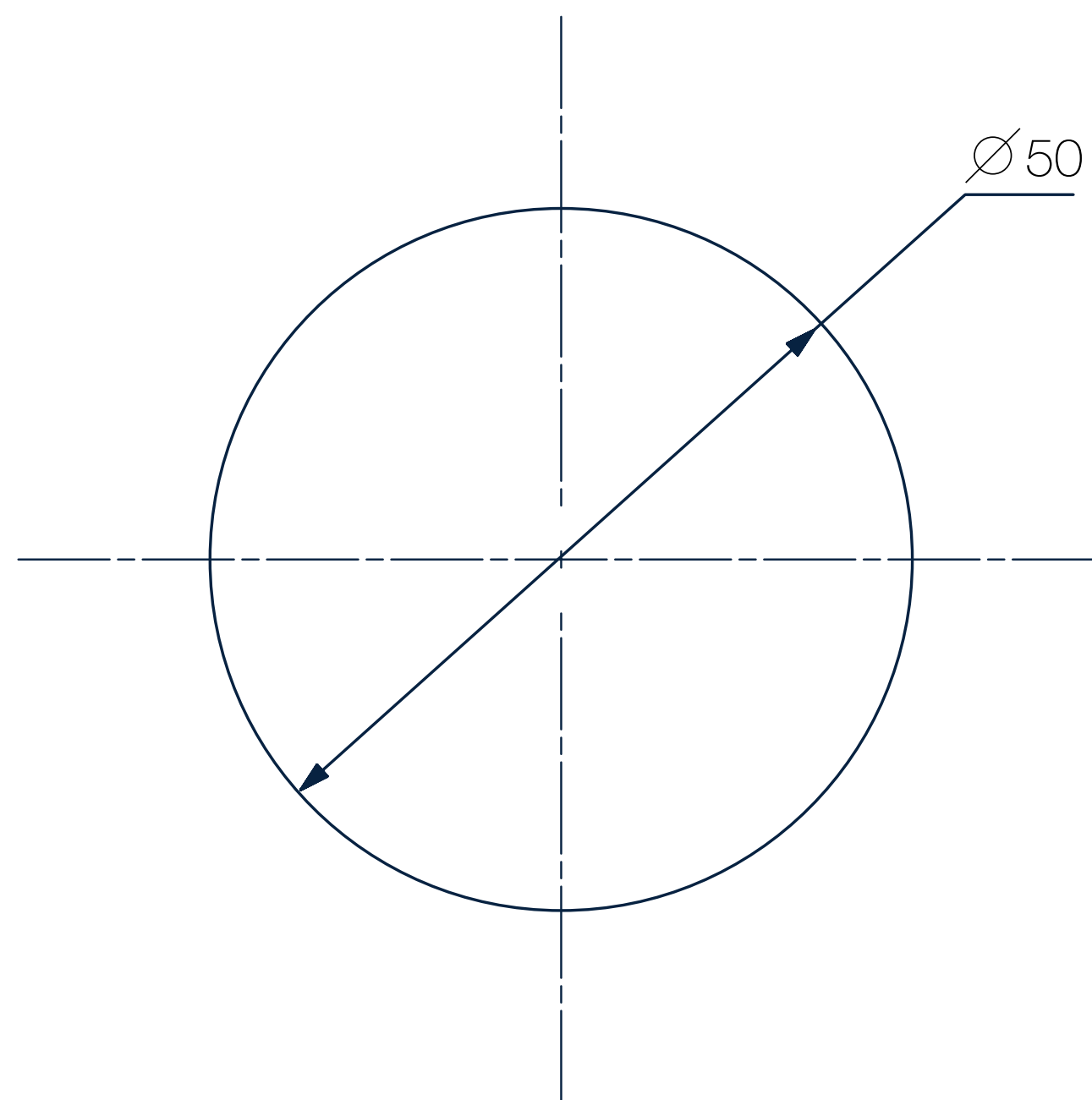
KES-E

KES-E-R

EN DE

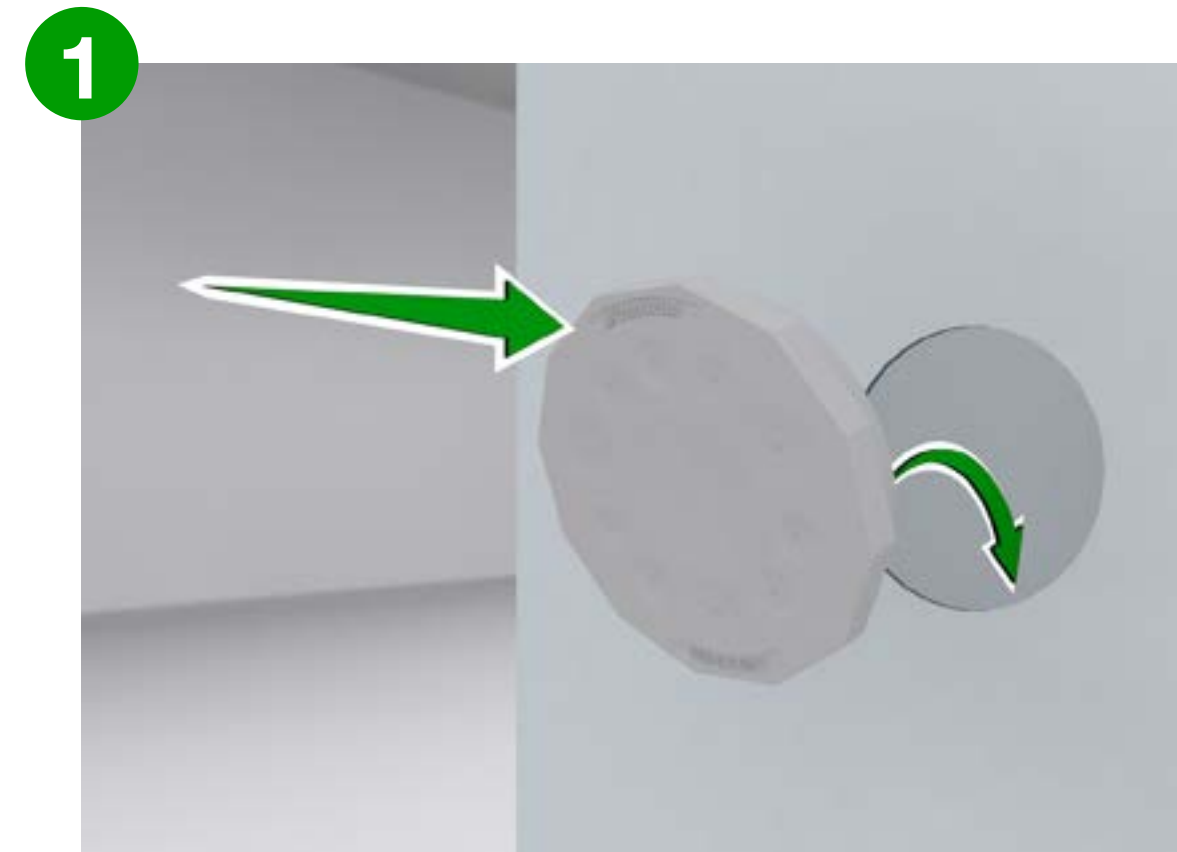
ABMESSUNGEN MONTAGEAUSSCHNITTE

INSTALLATION

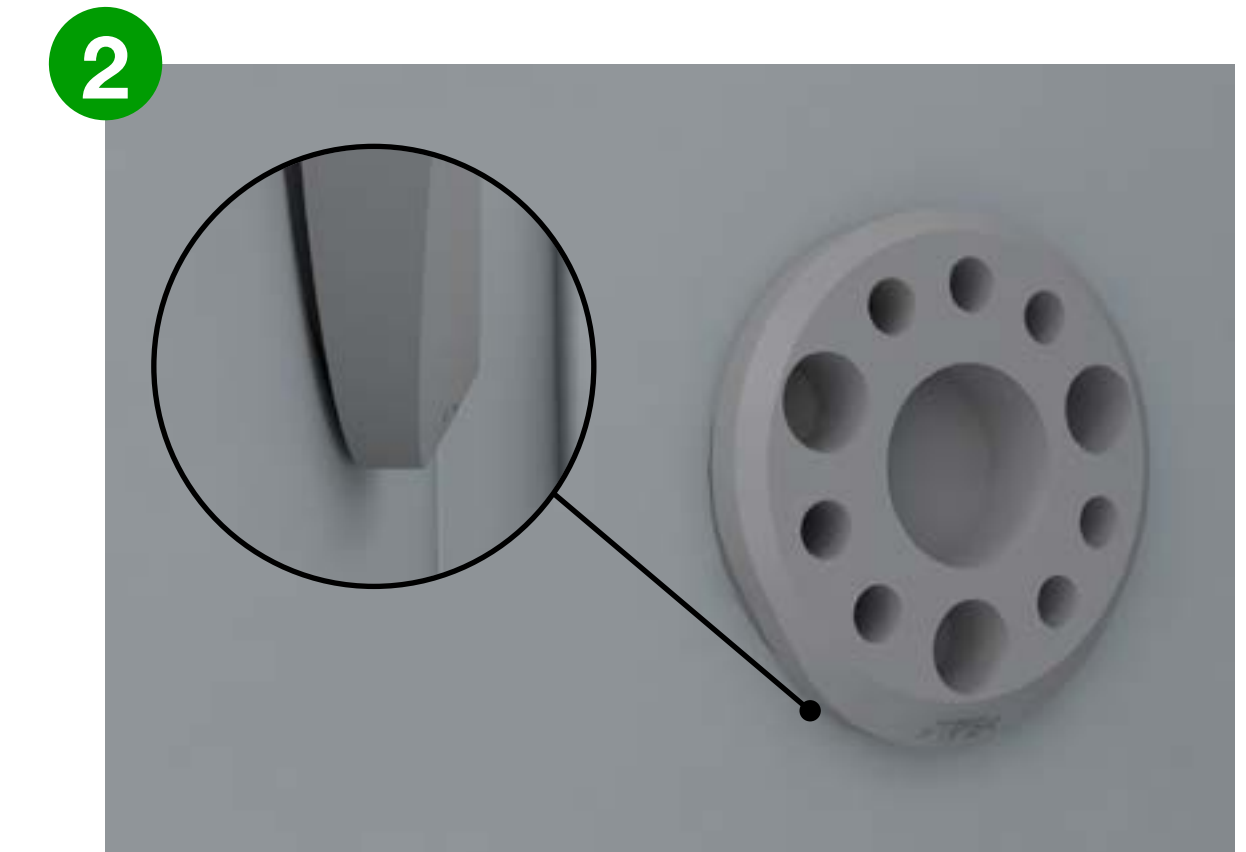


BLECHDICKE

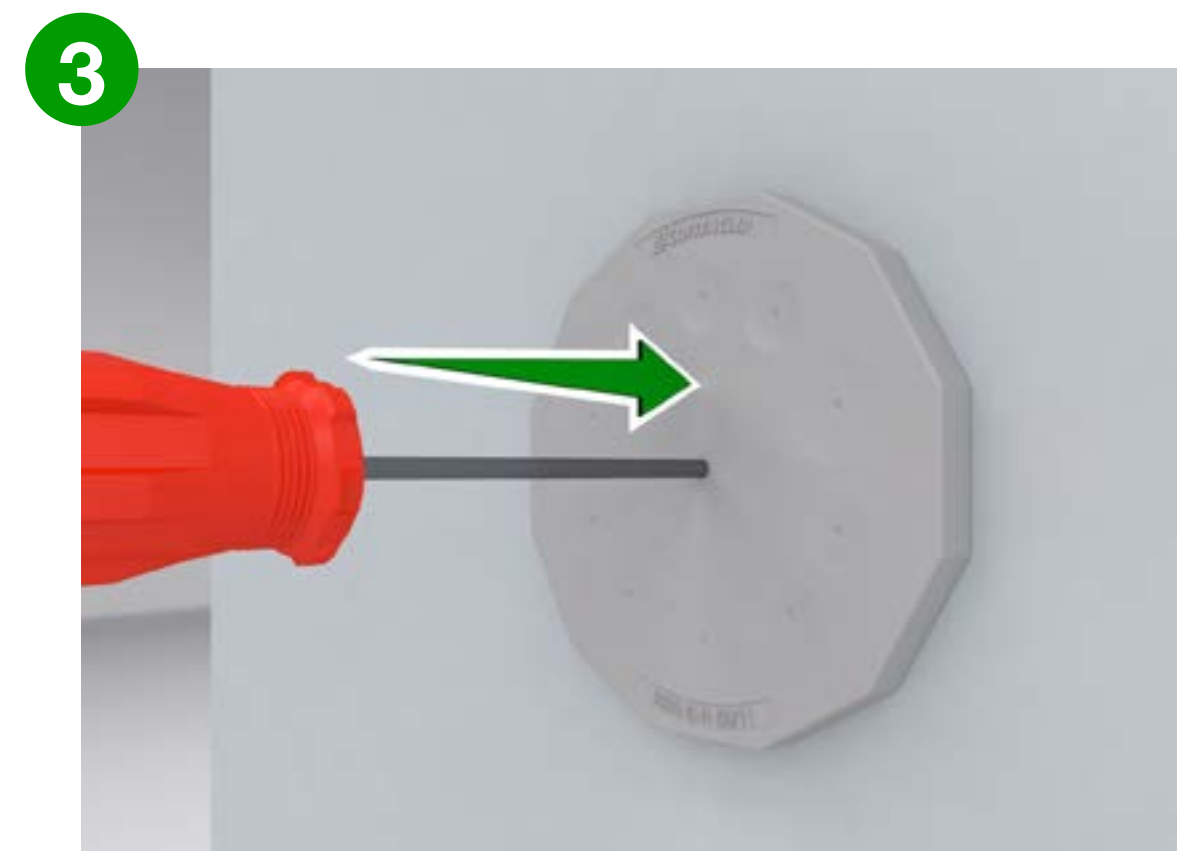
Variante	Dicke
A	1,5 – 2,5 mm
B	2,5 – 4 mm



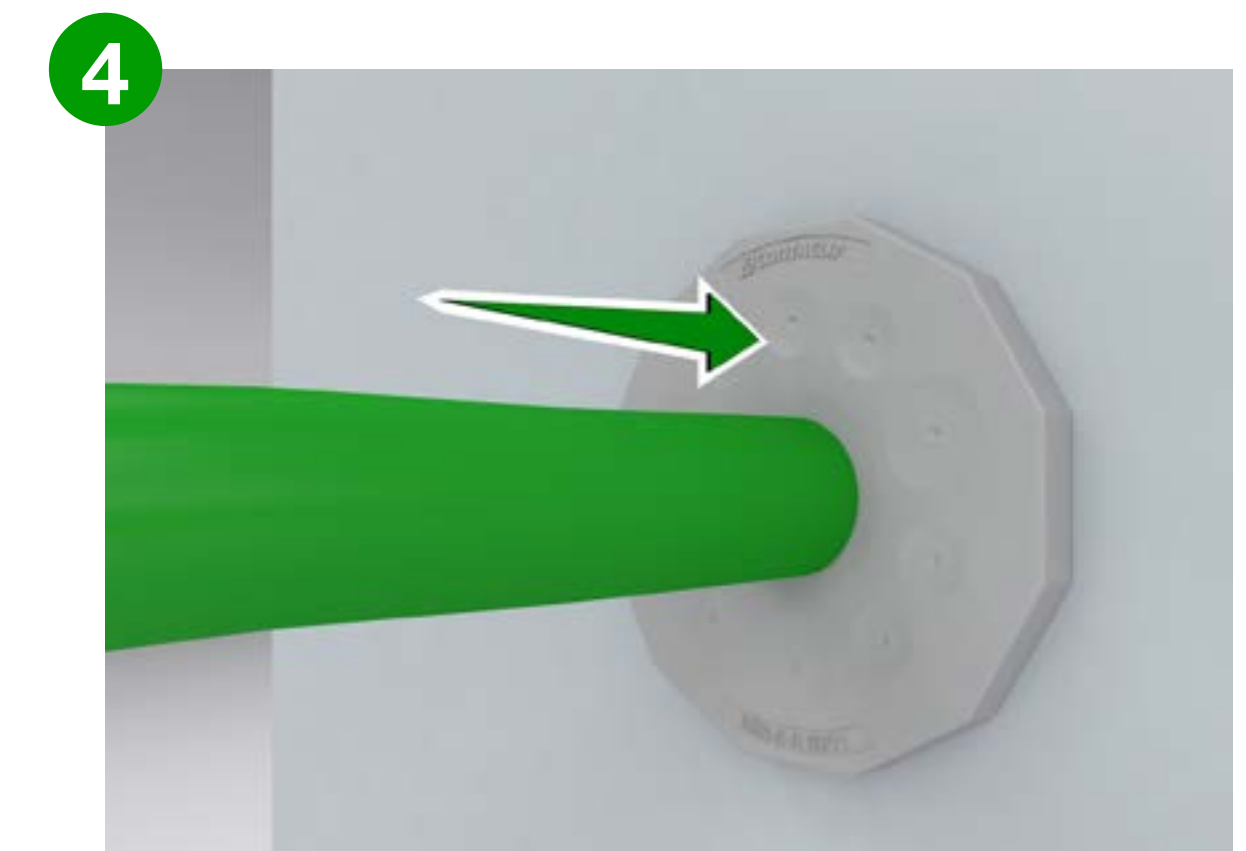
1 Die Kabeleinführung in den Ausschnitt legen.



2 Zum Einrasten in den Ausschnitt drücken.



3 Die Membran an der Durchsteckstelle durchstecken.



4 Kabel von außen durchstecken.