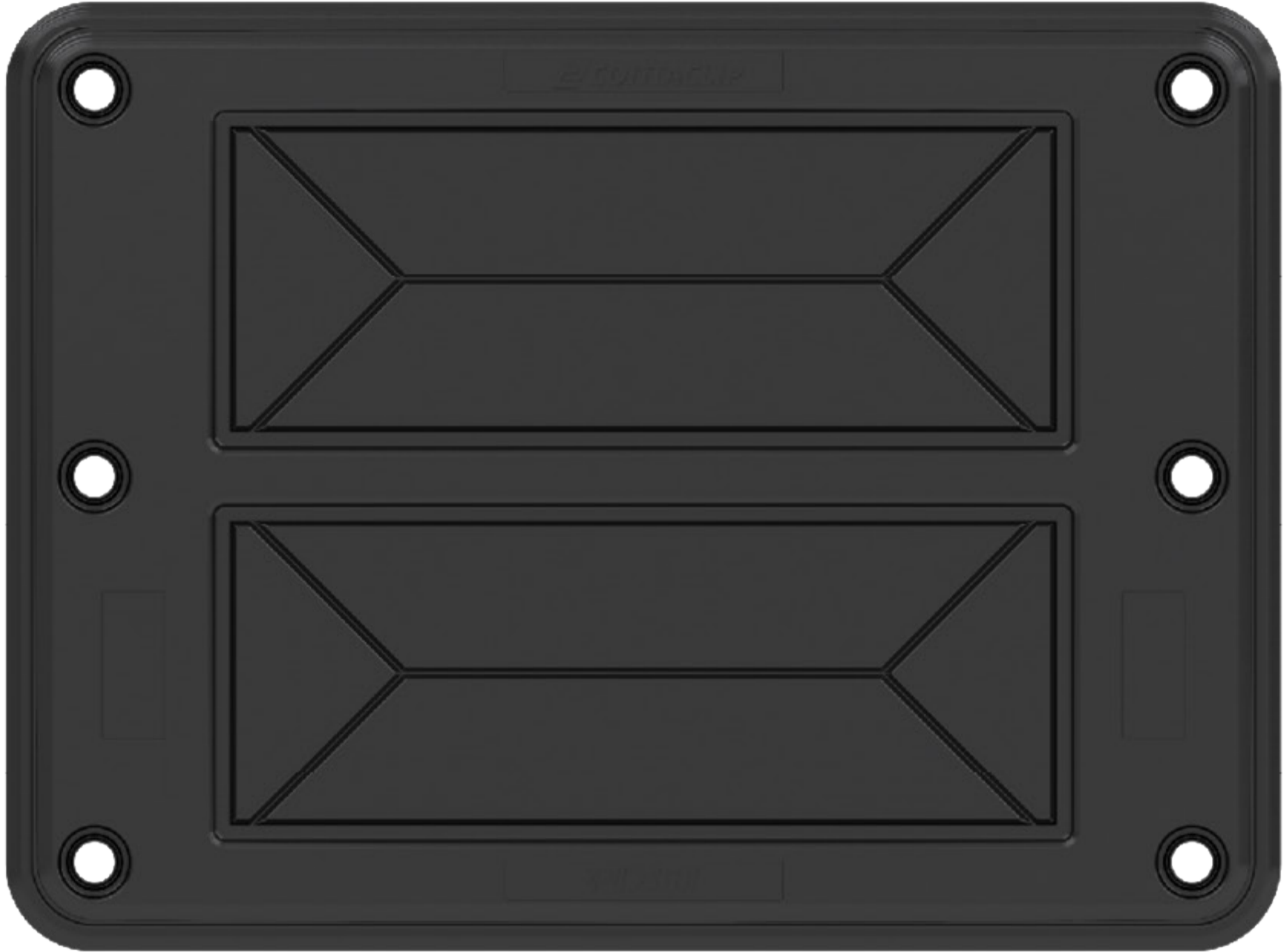


# CONTA-CABLE/ KDS-FP Flange Plates



KDS-FP 2 x 10/24

KDS-FP 3 x 10/24



# CONTA-CABLE/ KDS-FP-Flanschplatten



KDS-FP 2 x 10/24

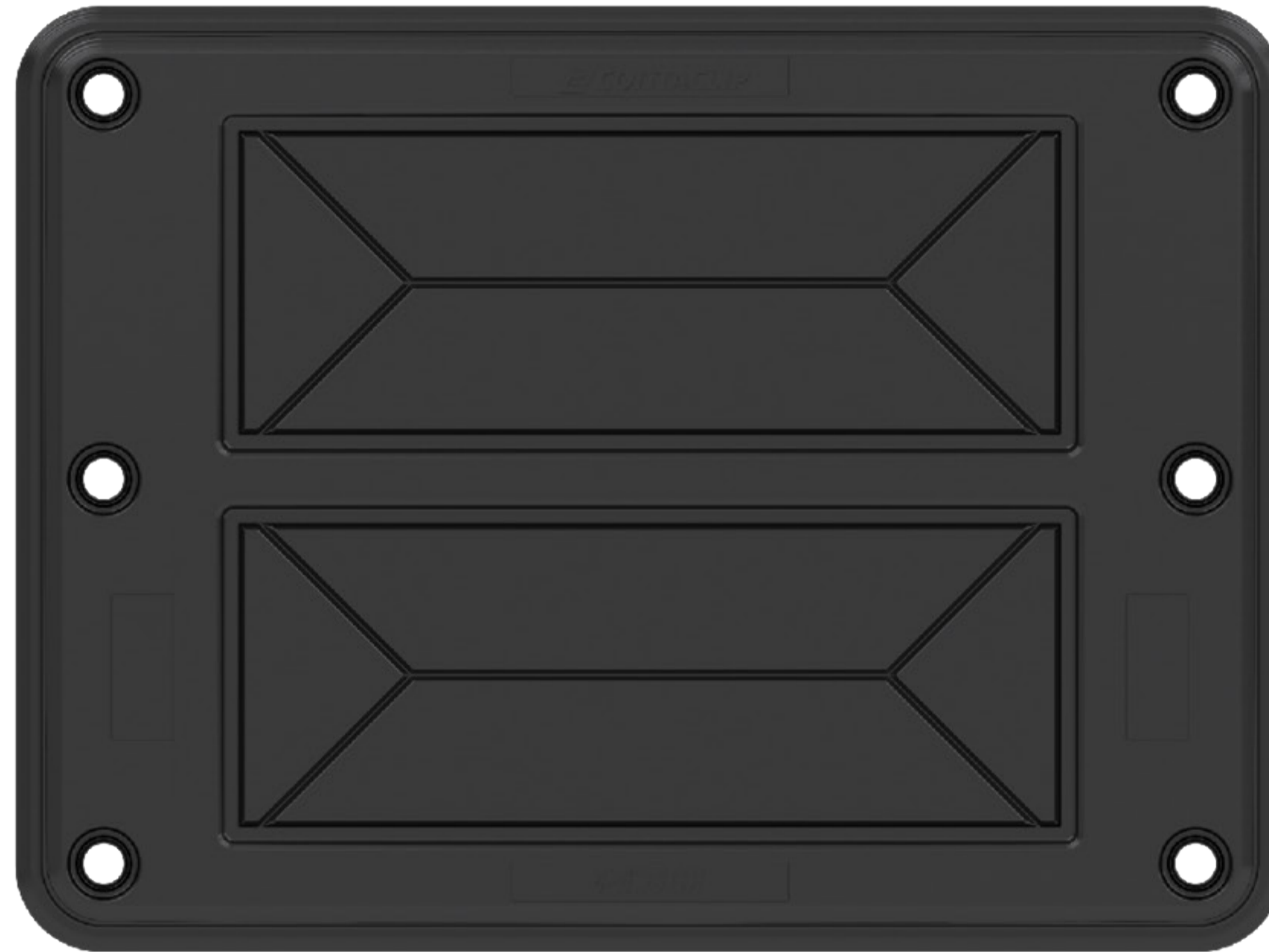
KDS-FP 3 x 10/24



EN



DE



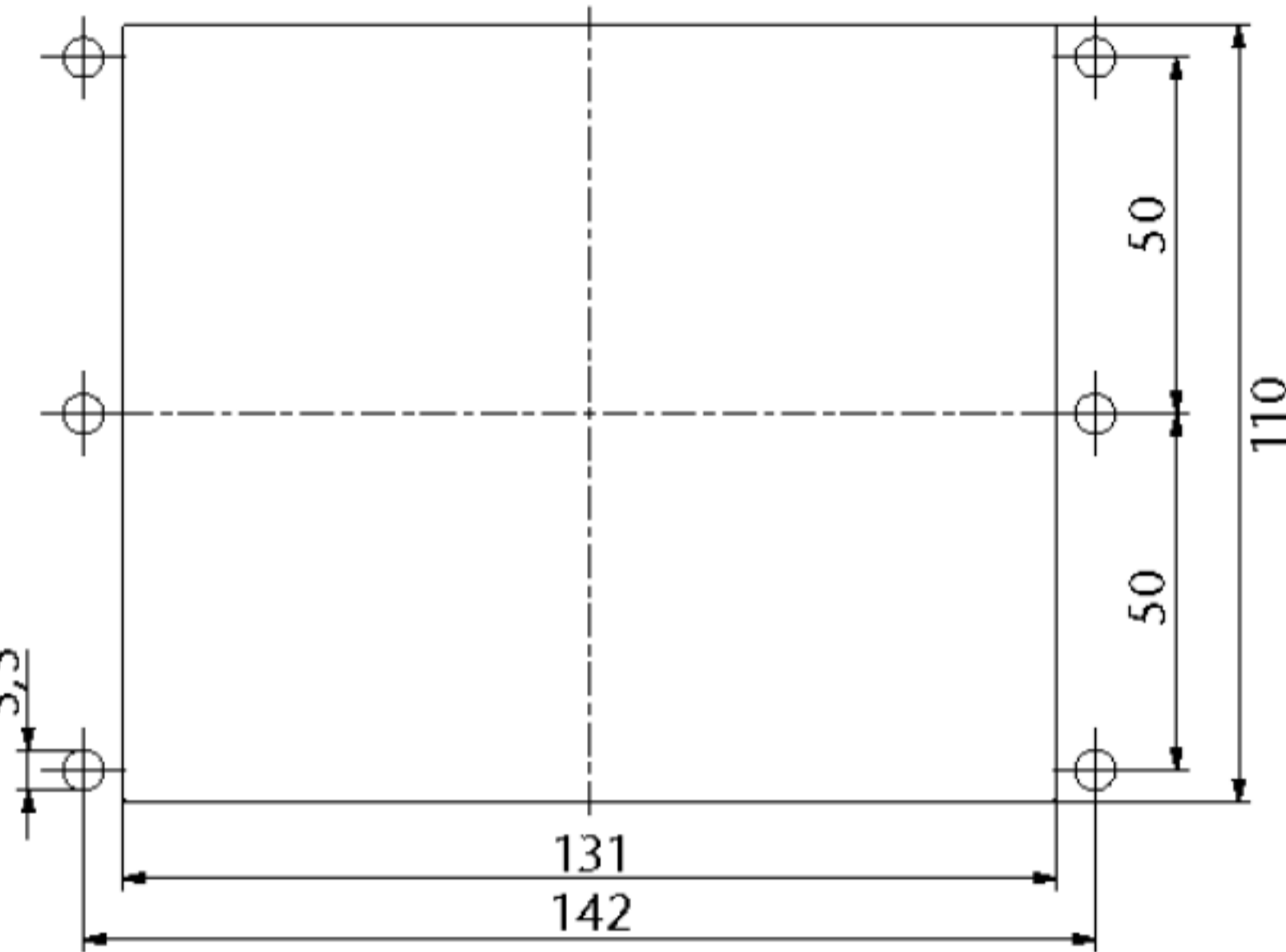


# CONTA-CABLE/ KDS-FP Flange Plates

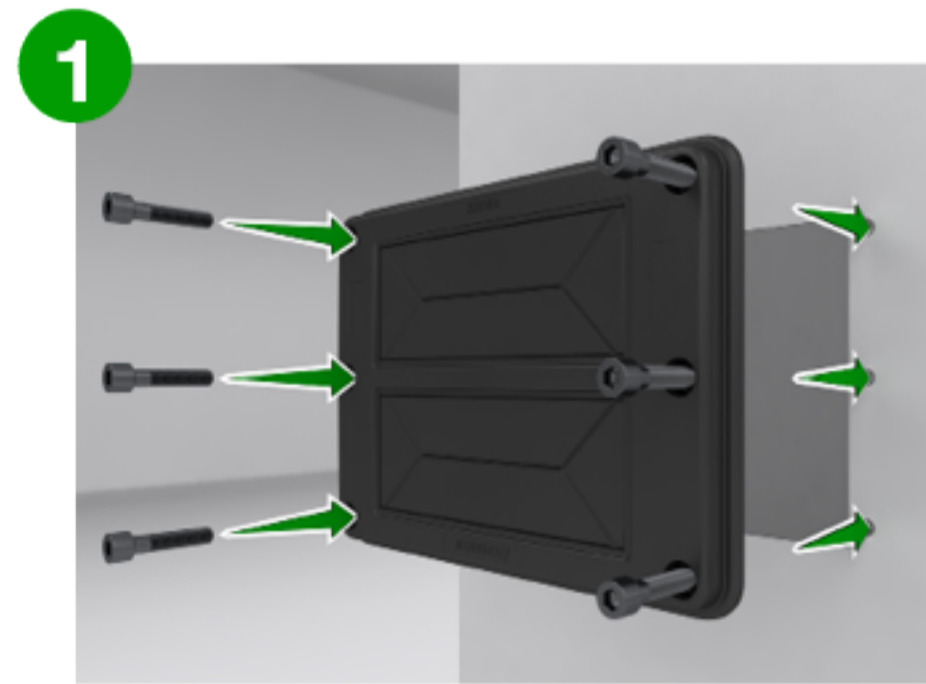


🏠
KDS-FP 2 x 10/24
KDS-FP 3 x 10/24

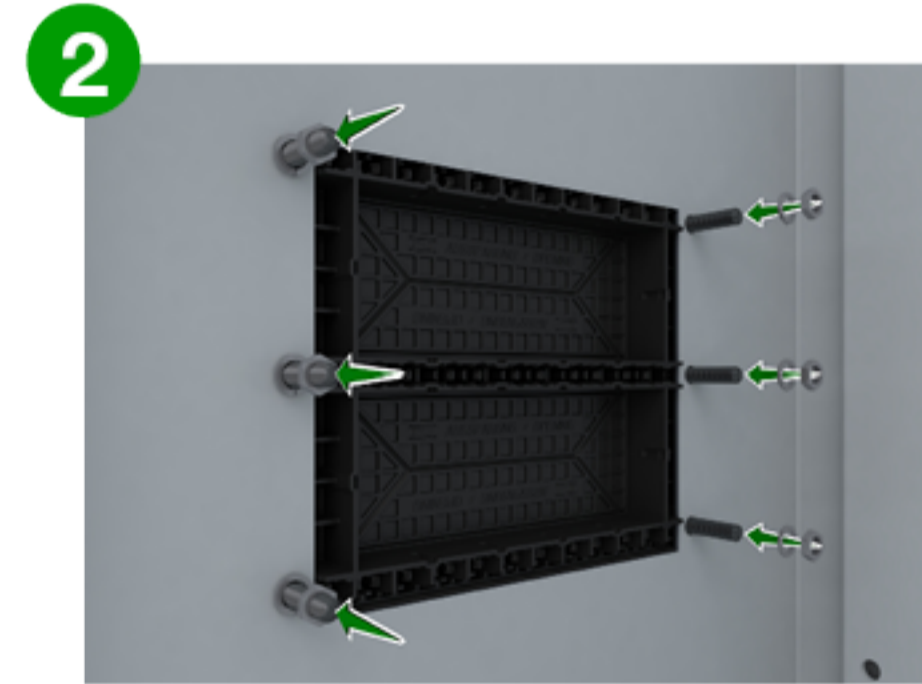
## PRODUCT DATA



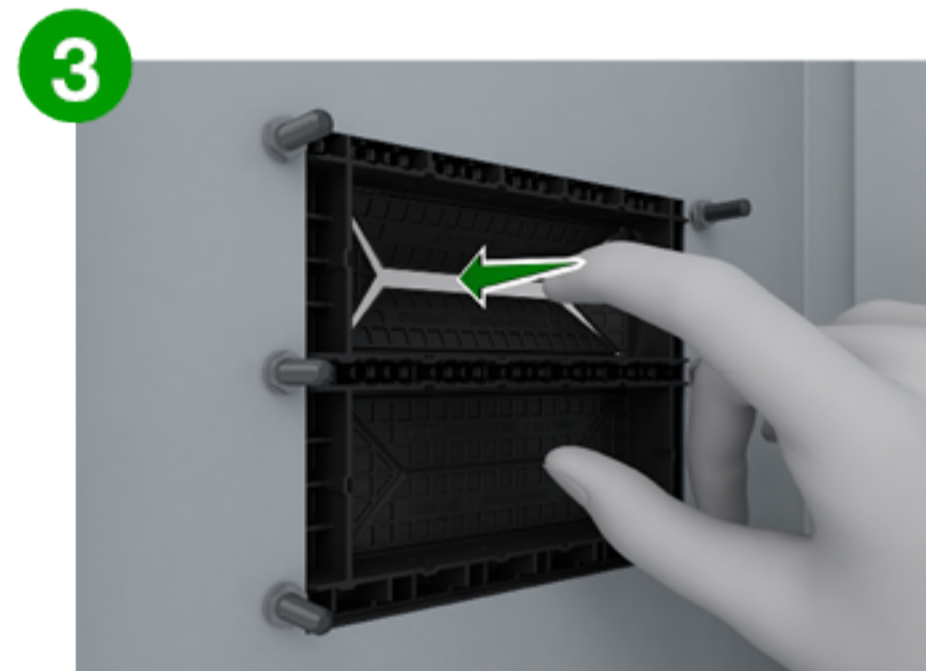
## INSTALLATION



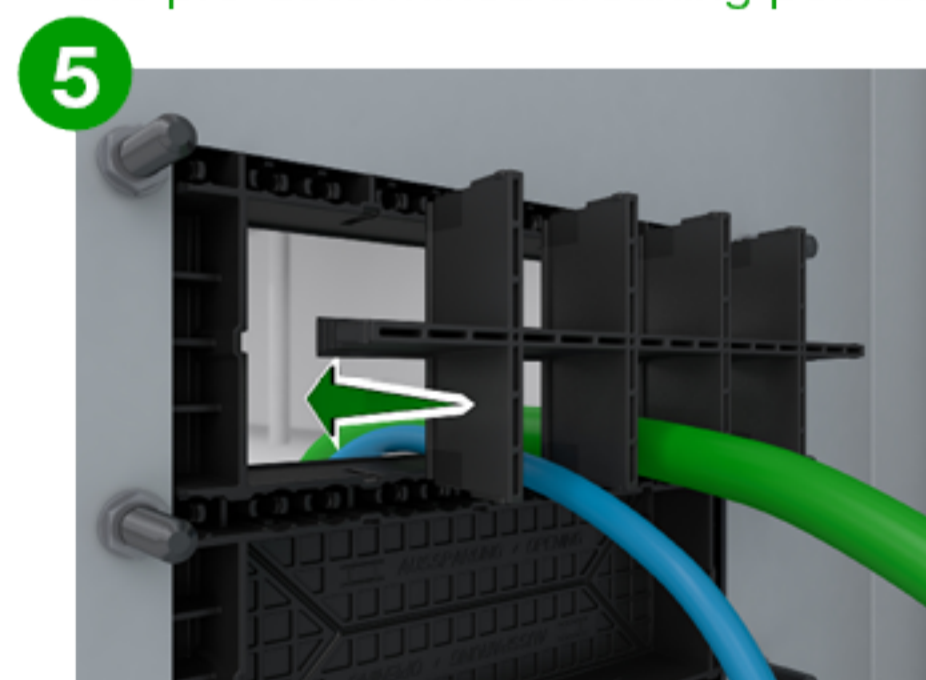
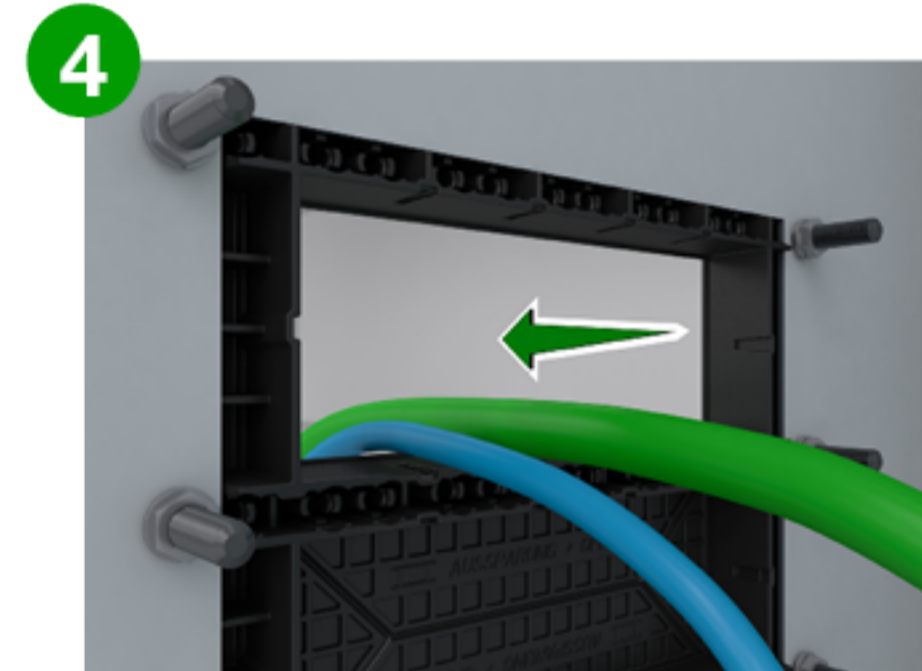
1 Insert the M5 screws (ISO 4762).



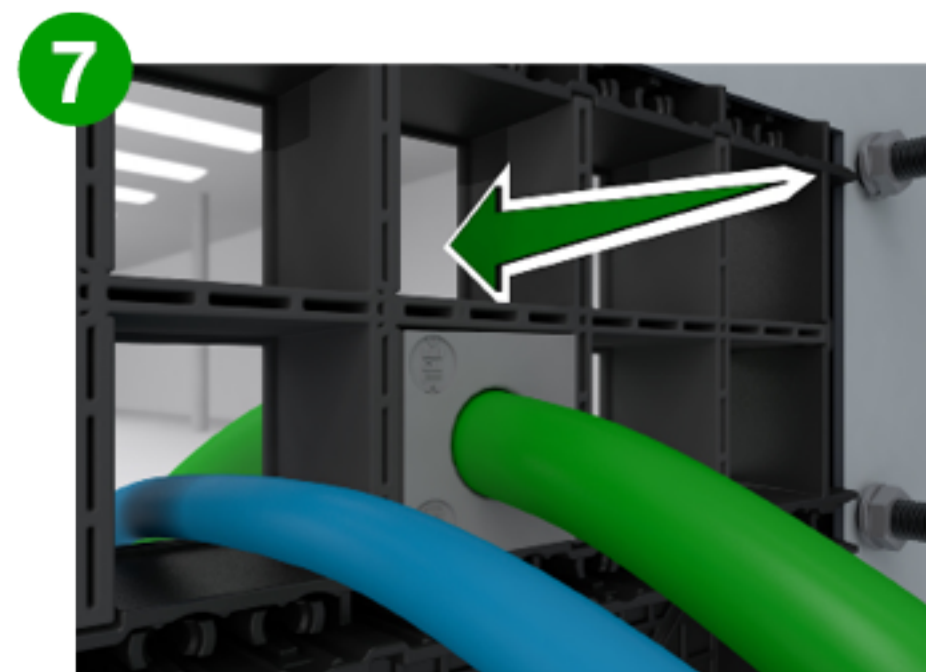
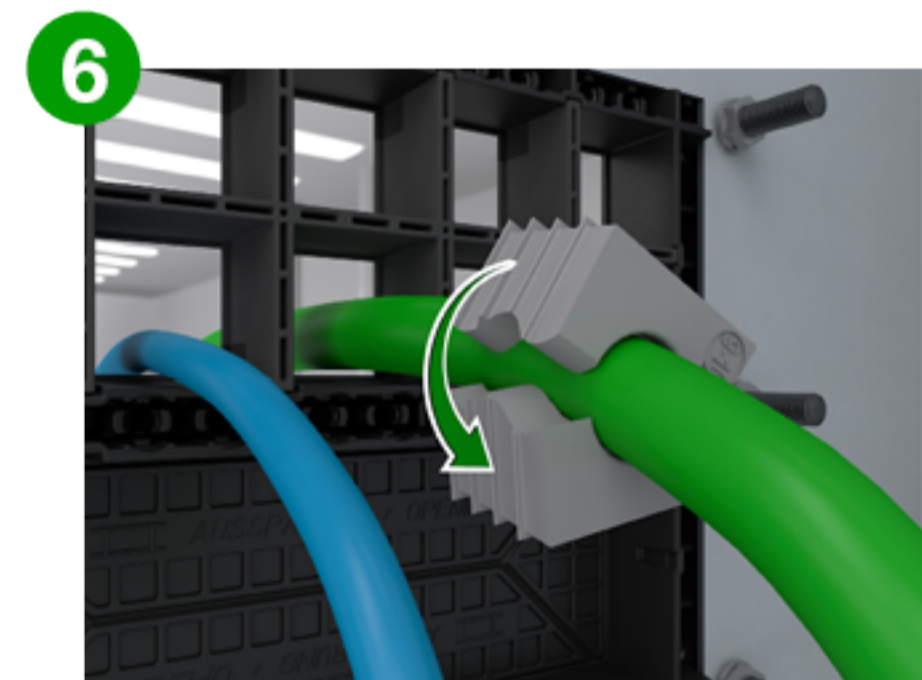
2 Use tightening torque of 3 Nm.



3 Break out the flange plate section at the pre-determined breaking points.

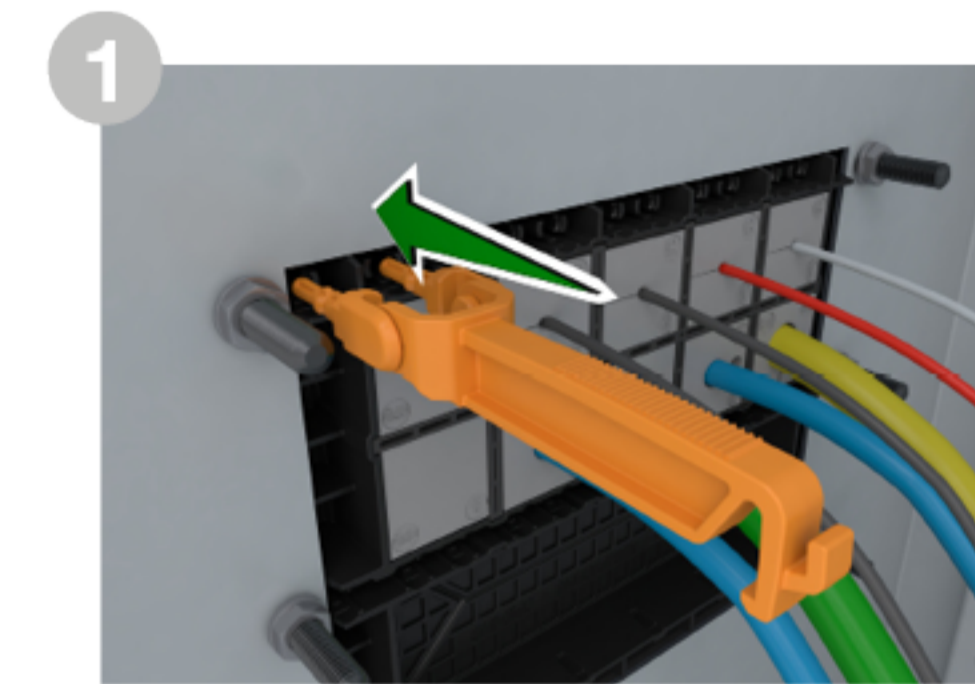


5 Click the inlay into position.

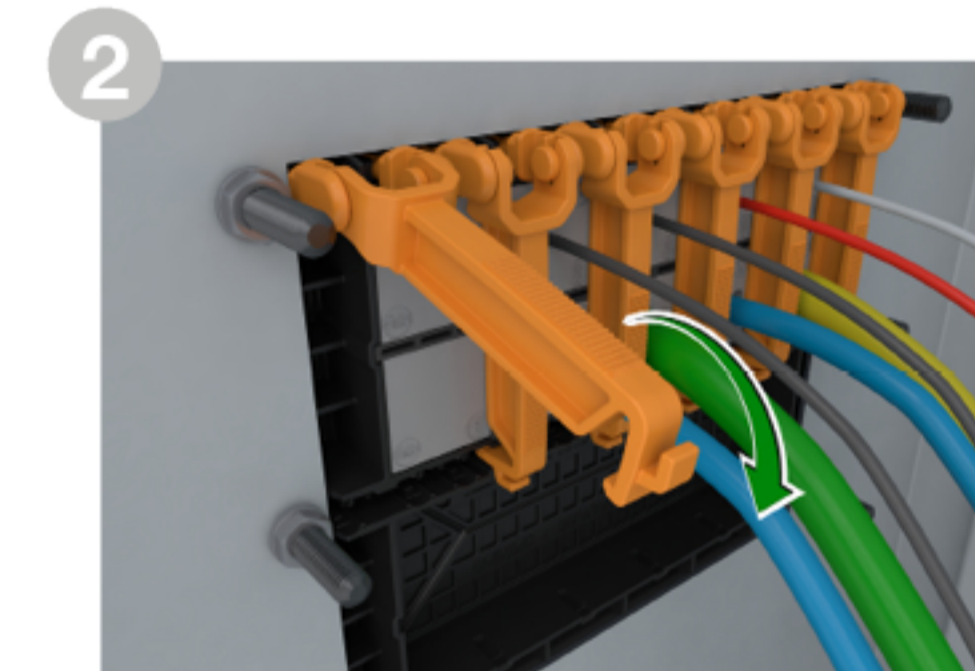


7 Push seal all the way in.

## INNER LOCKS



1 Optional inner lock elements



### UL INNER COVER FOR FLANGE PLATES

According to UL Standard 508A (File E489821), the following Conditions of Acceptability apply:

- When there is a position in the inlay that is only covered by a dummy sealing element, it must be additionally secured using 2 KDS-FP-IVR locking elements.
- A non-broken section of the flange plate must be covered with a KDS-FP-AD/UL cover. This cover must then be secured using 2 KDS-FP-IVR locking elements.



## COMBINATION OPTIONS

Inlay			
1	2	4	6
28516.4	28517.4	28518.4	28519.4
<b>x</b>	<b>x</b>	<b>x</b>	<b>x</b>



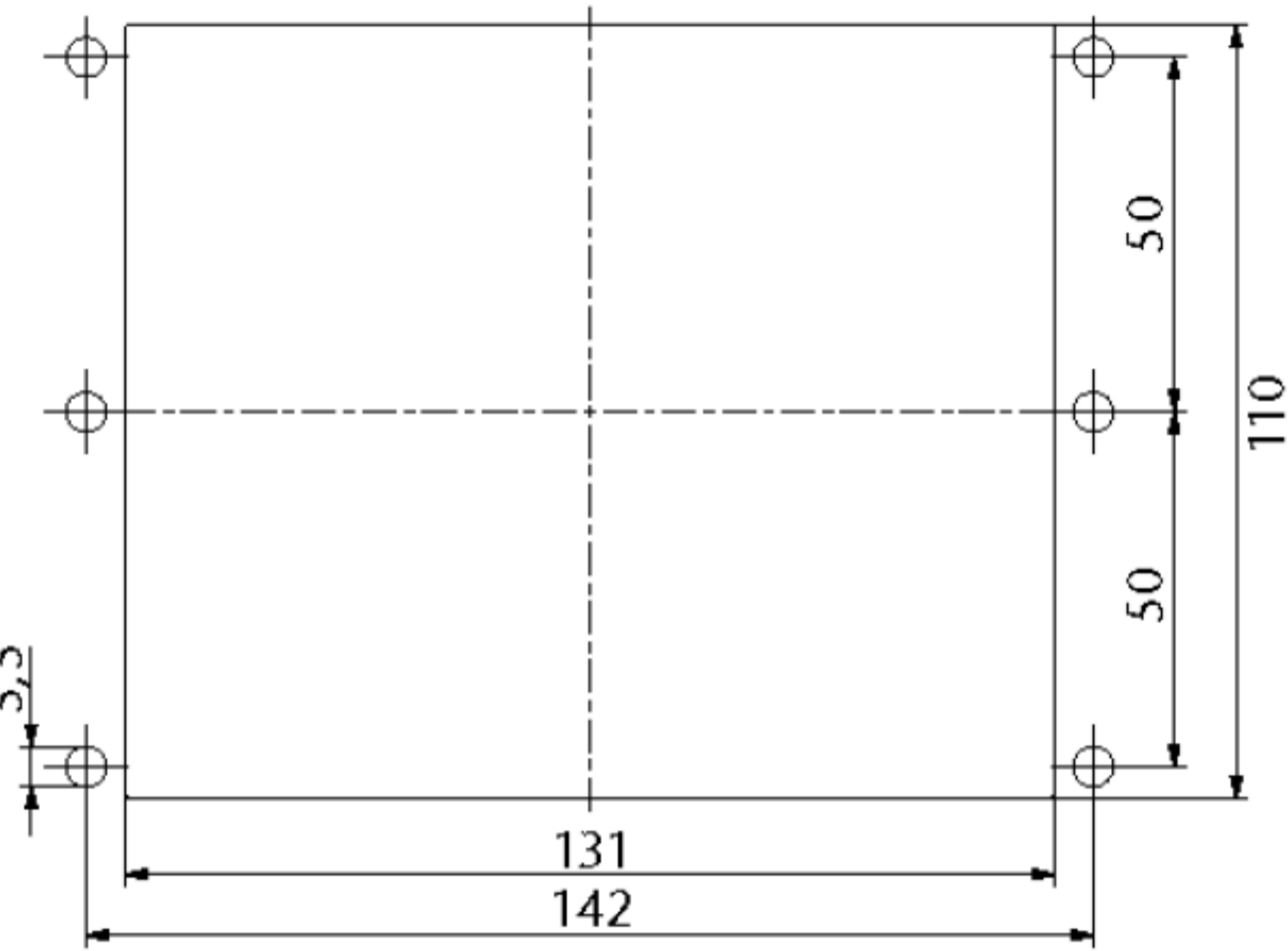
# CONTA-CABLE/ KDS-FP-Flanschplatten



KDS-FP 2 x 10/24

KDS-FP 3 x 10/24

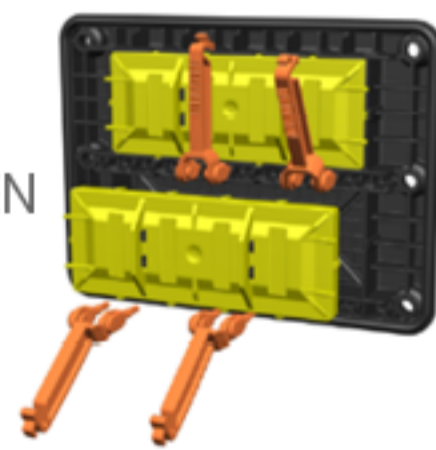
## PRODUKTDATEN



UL INNERE ABDECKUNG FÜR FLANSCHPLATTEN

Gemäß UL-Standard 508A (File E489821) gelten die folgenden Akzeptanzbedingungen:

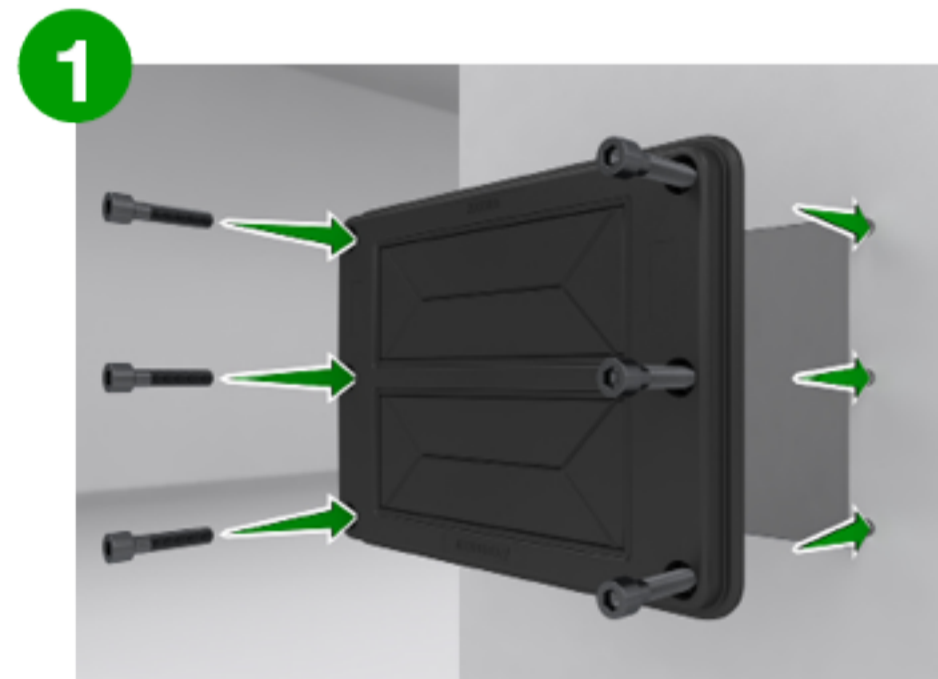
- Wenn es eine Position im Inlay gibt, die nur durch einen Blindstopfen abgedeckt ist, muss diese zusätzlich mit 2 KDS-FP-IVR Verriegelungselementen gesichert werden.
- Ein nicht ausgebrochener Flanschplattenabschnitt muss mit einer KDS-FP-AD/UL-Abdeckung abgedeckt werden. Diese Abdeckung muss dann mit 2 Verriegelungselementen KDS-FP-IVR gesichert werden.



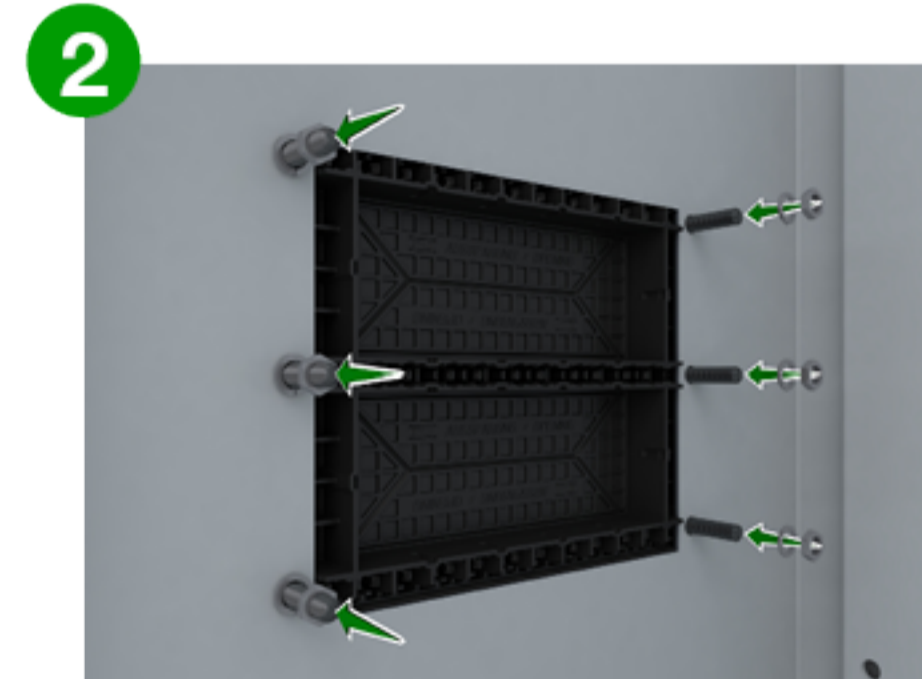
## KOMBINATIONSMÖGLICHKEITEN

Inlay			
1	2	4	6
28516,4	28517,4	28518,4	28519,4
x	x	x	x

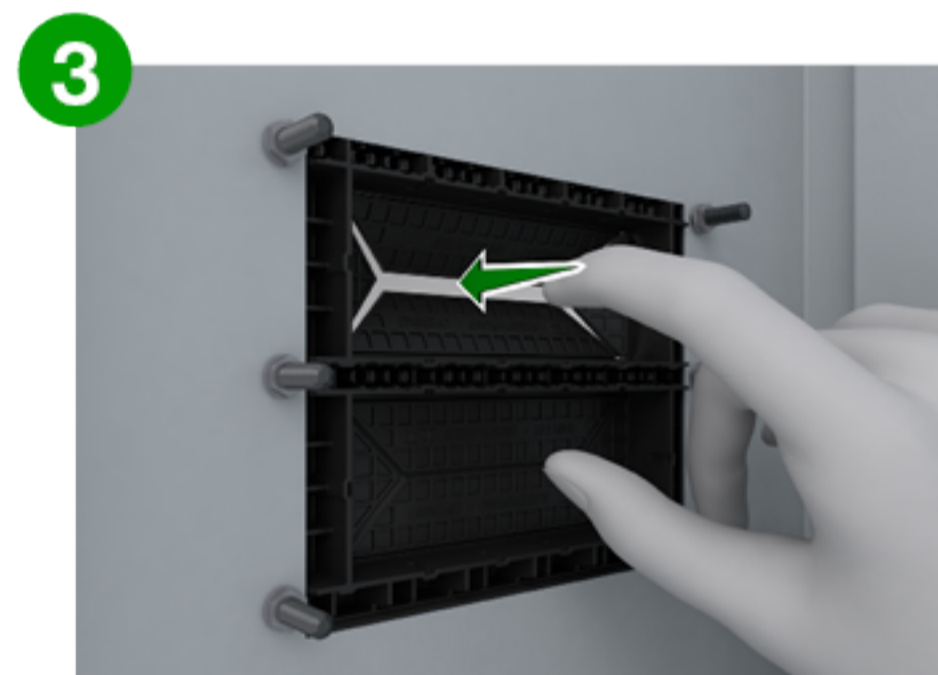
## INSTALLATION



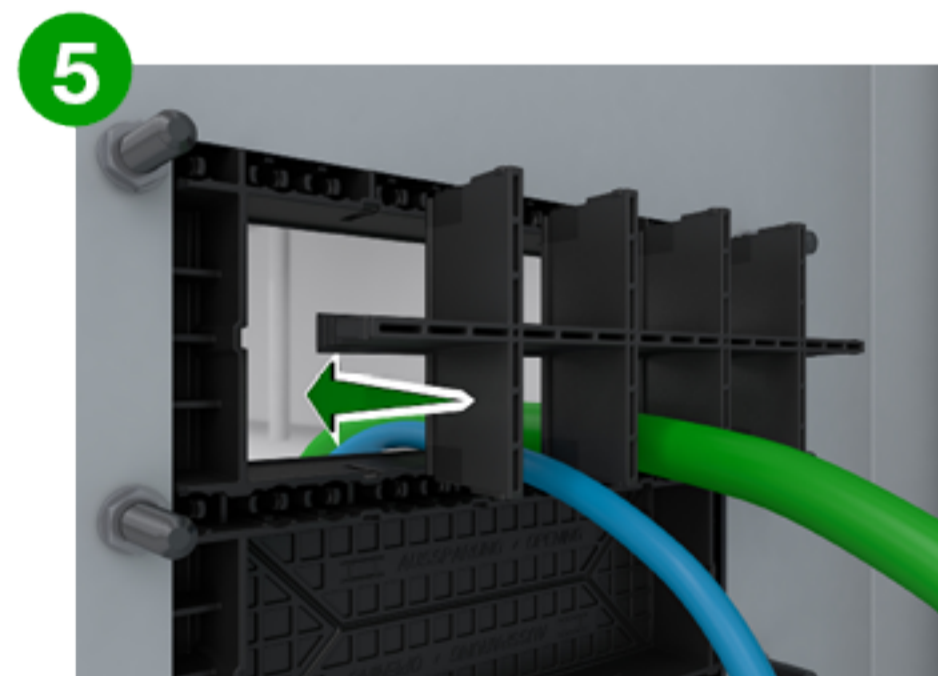
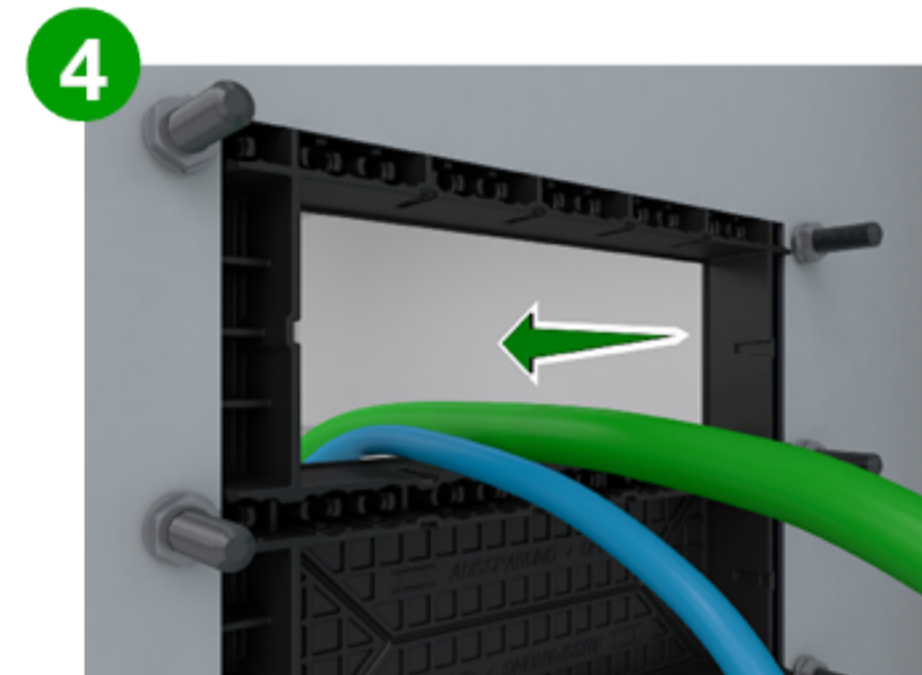
1 Setzen Sie die M5-Schrauben (ISO 4762) ein.



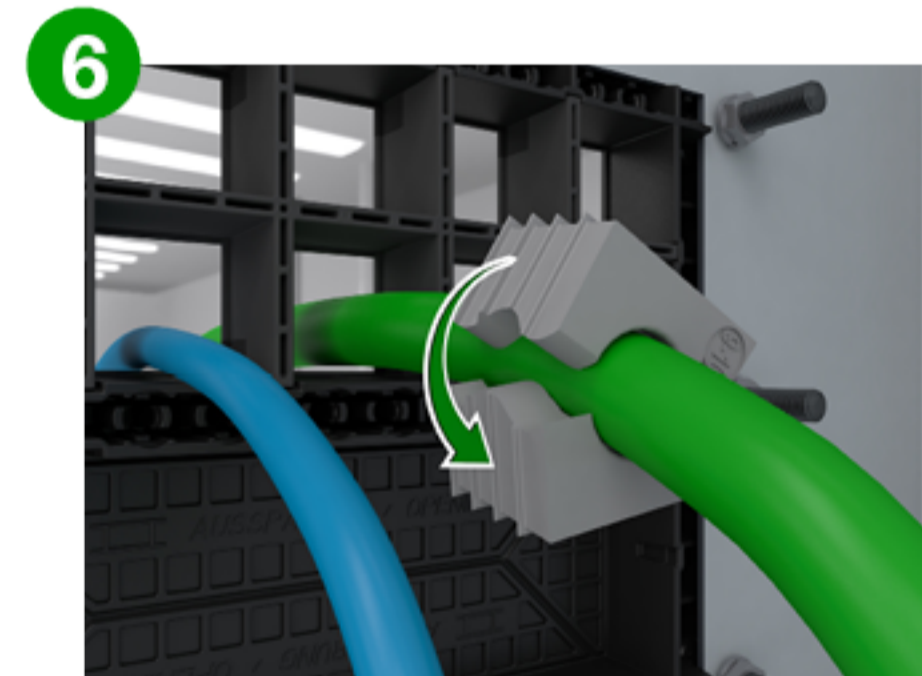
2 Anzugsdrehmoment von 3 Nm.



3 Brechen Sie den Flanschplattenabschnitt an den Sollbruchstellen aus.

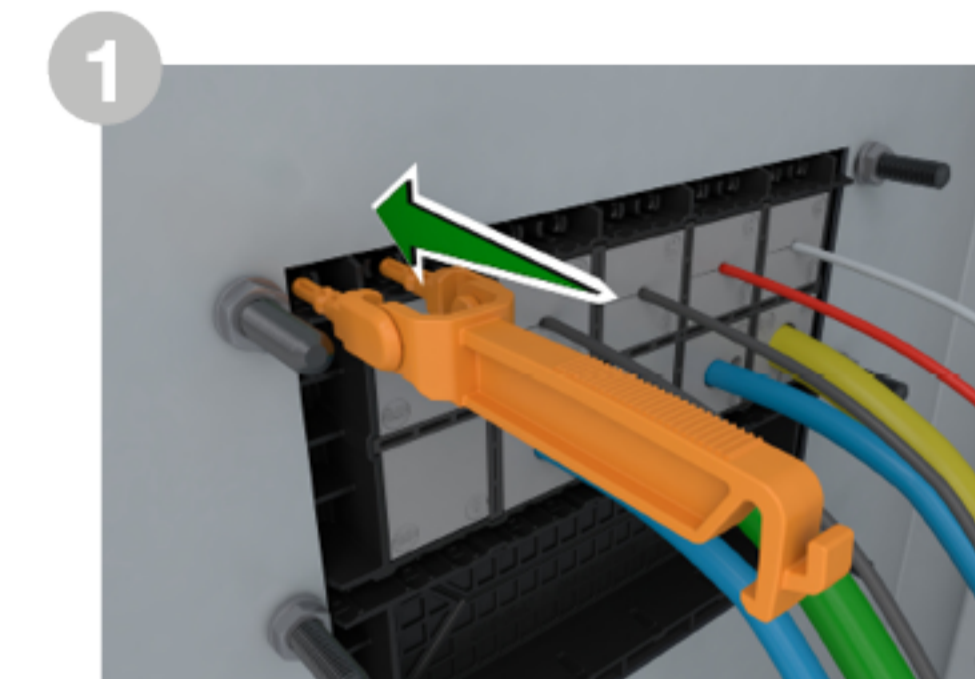


5 Klicken Sie das Inlay in seine Position.

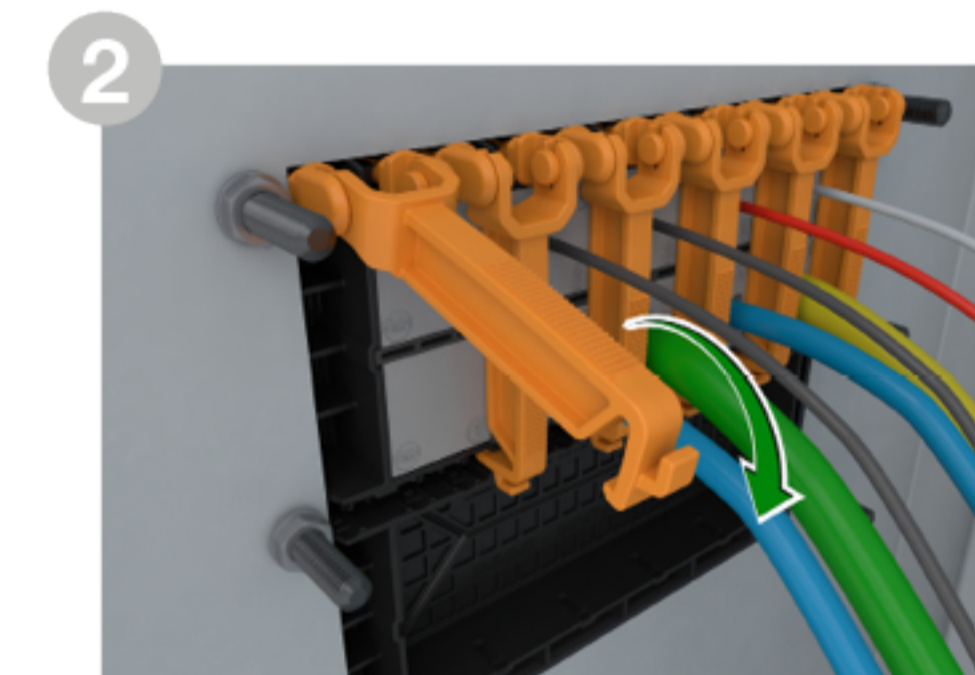


7 Drücken Sie die Dichtung vollständig hinein.

## INNERE VERRIEGELUNG



1 Optionale innere Verriegelungselemente



2



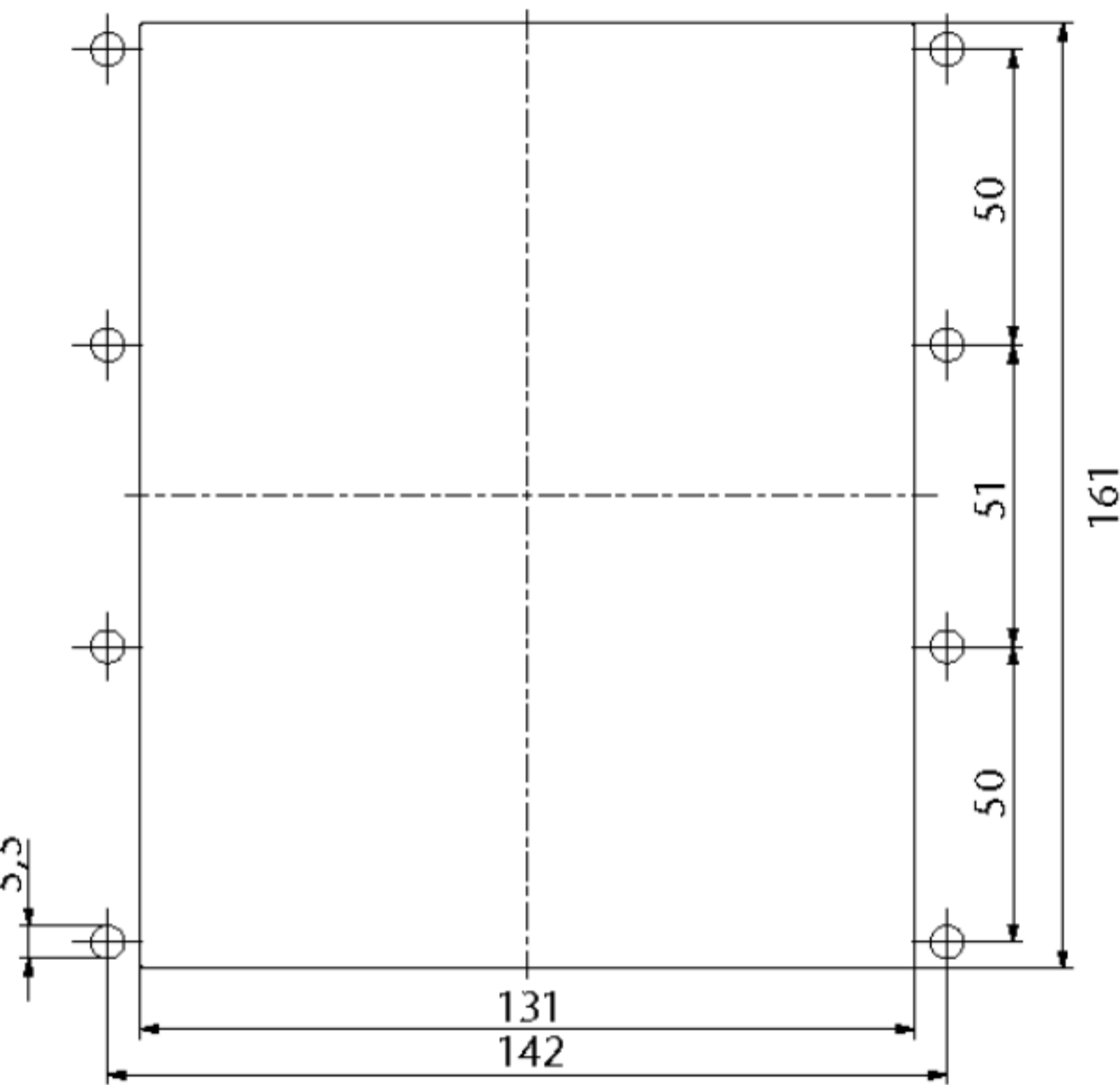
# CONTA-CABLE/ KDS-FP Flange Plates



KDS-FP 2 x 10/24

KDS-FP 3 x 10/24

## PRODUCT DATA



UL INNER COVER FOR FLANGE PLATES

According to UL Standard 508A (File E489821), the following Conditions of Acceptability apply:

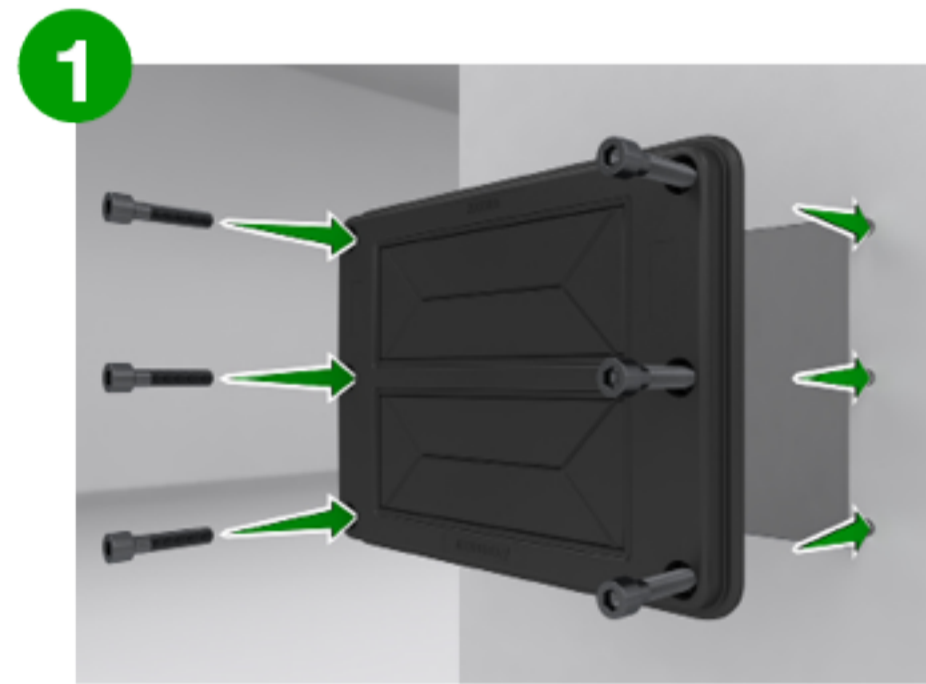
- When there is a position in the inlay that is only covered by a dummy sealing element, it must be additionally secured using 2 KDS-FP-IVR locking elements.
- A non-broken section of the flange plate must be covered with a KDS-FP-AD/UL cover. This cover must then be secured using 2 KDS-FP-IVR locking elements.



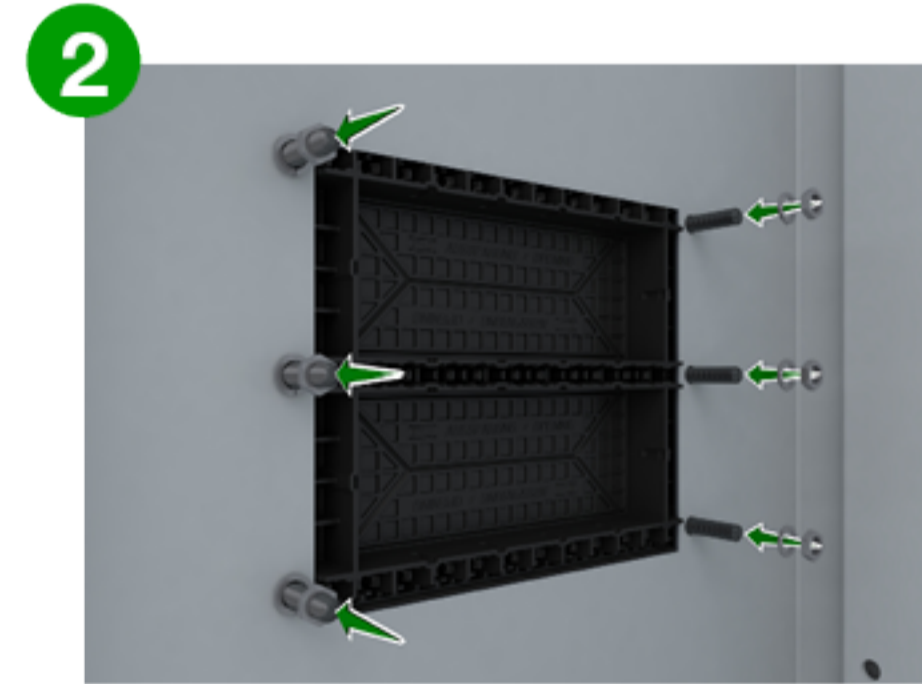
## COMBINATION OPTIONS

Inlay			
1	2	4	6
28516.4	28517.4	28518.4	28519.4
x	x	x	x

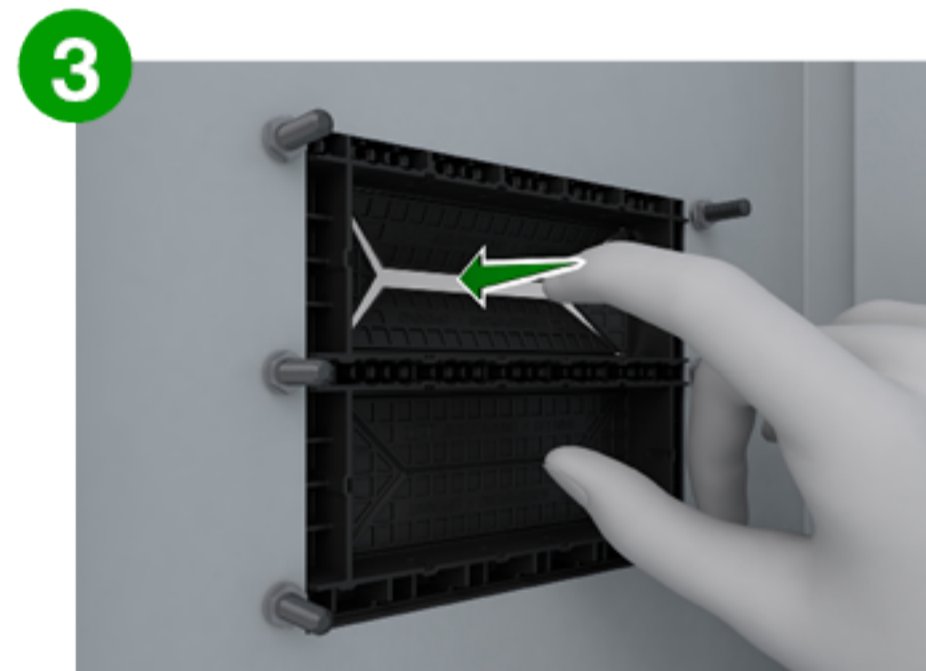
## INSTALLATION



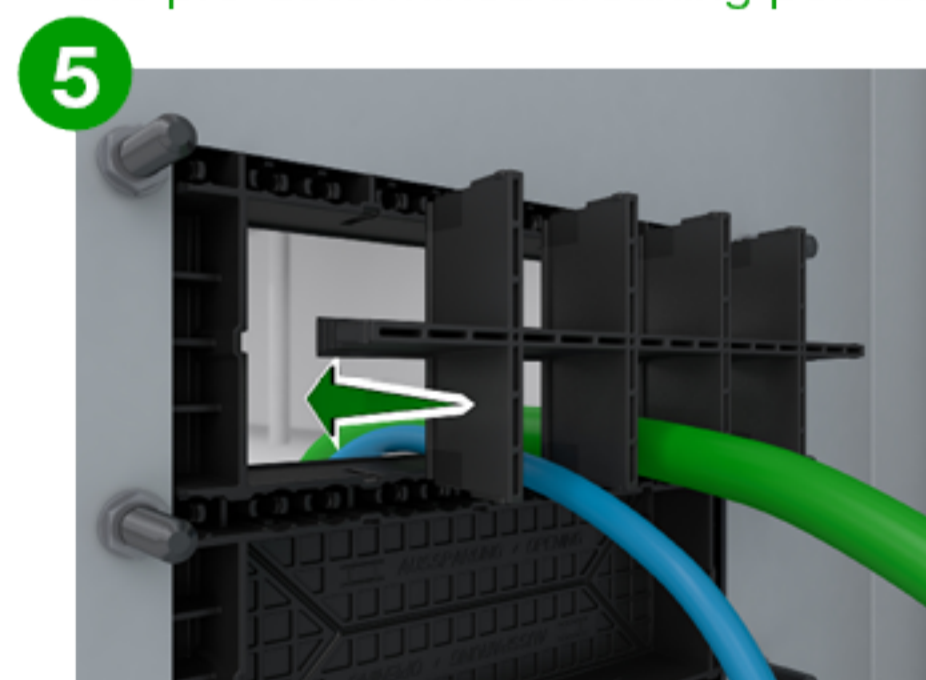
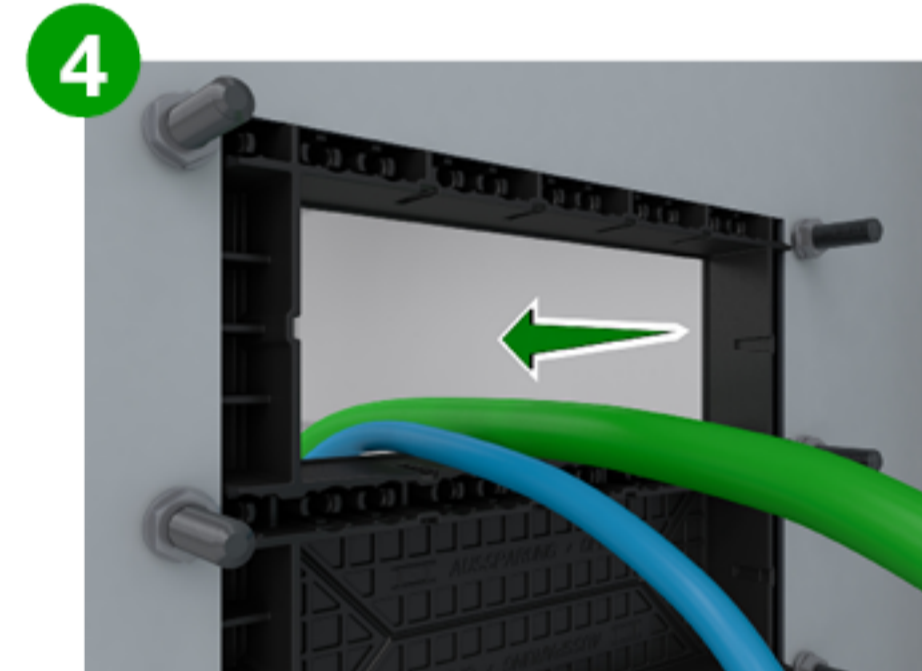
Insert the M5 screws (ISO 4762).



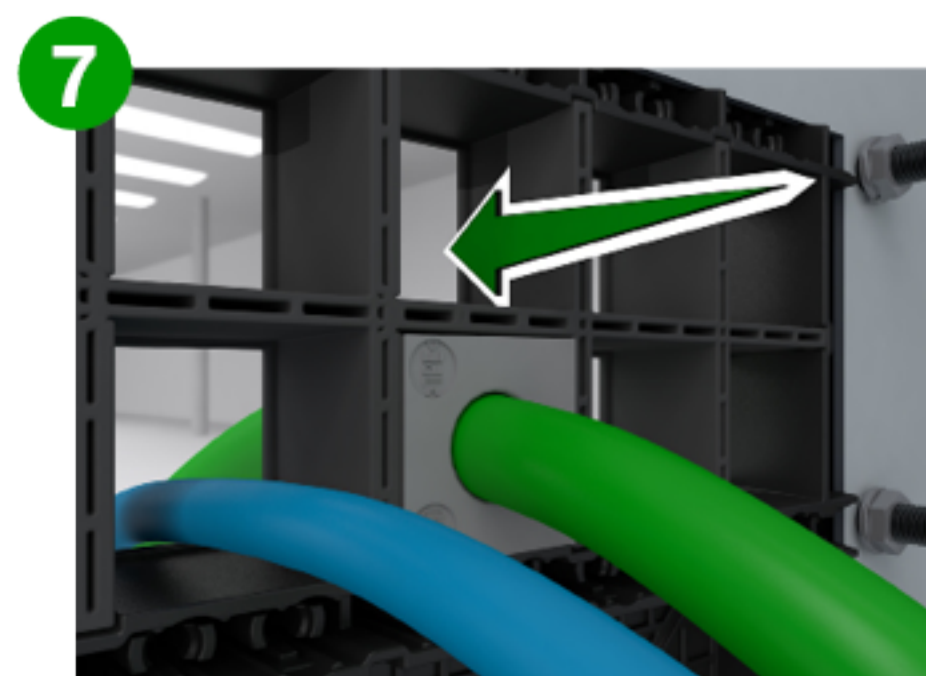
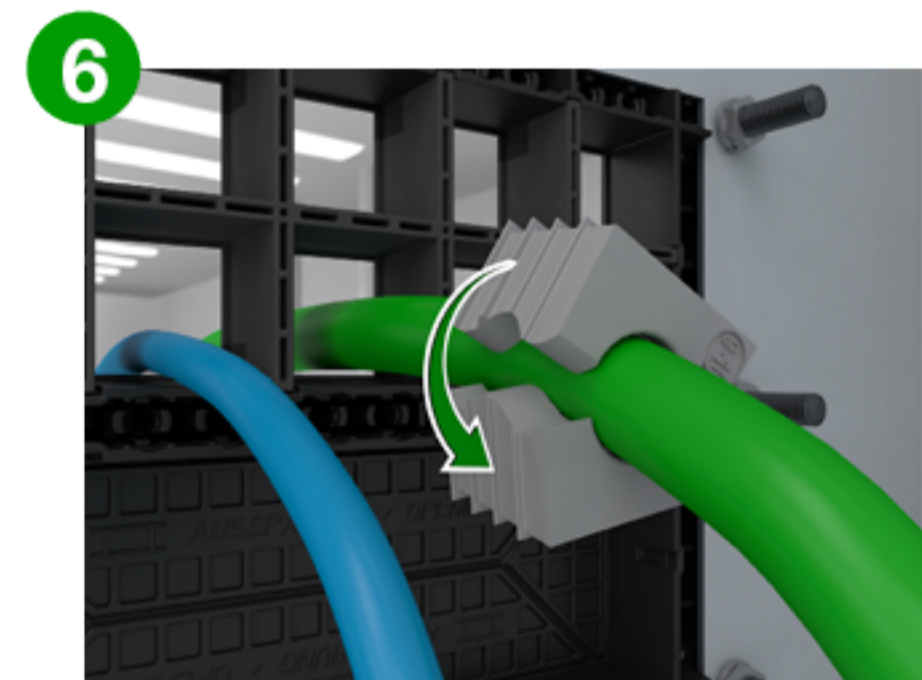
Use tightening torque of 3 Nm.



Break out the flange plate section at the pre-determined breaking points.

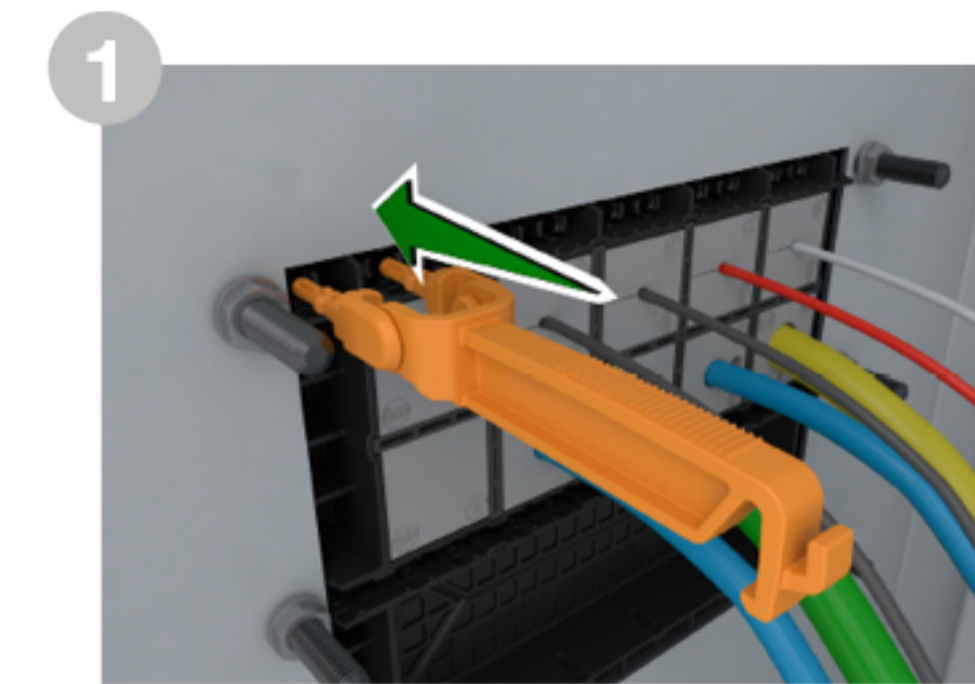


Click the inlay into position.

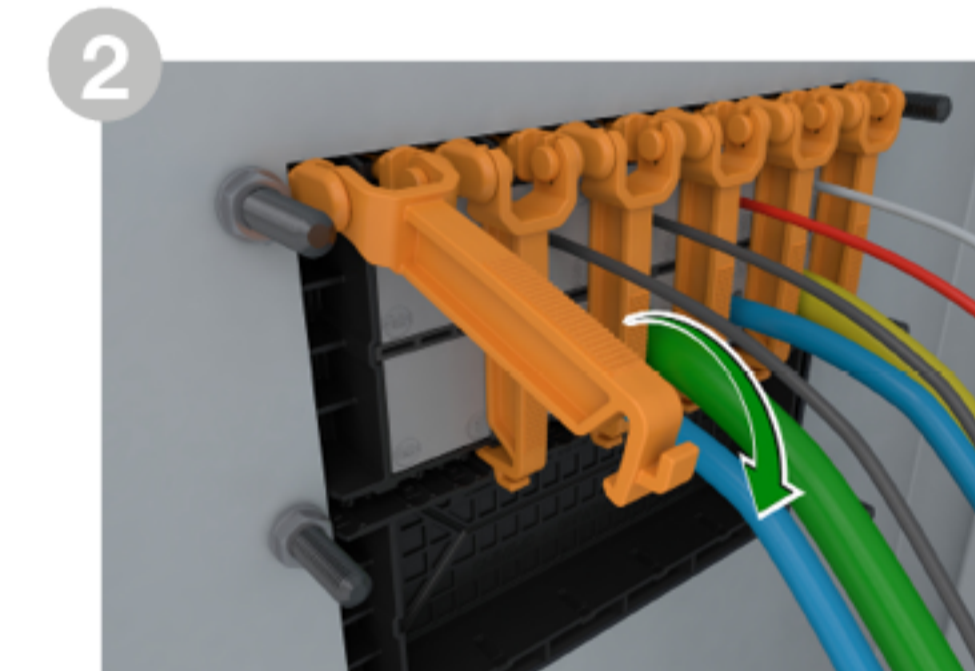


Push seal all the way in.

## INNER LOCKS



Optional inner locking elements





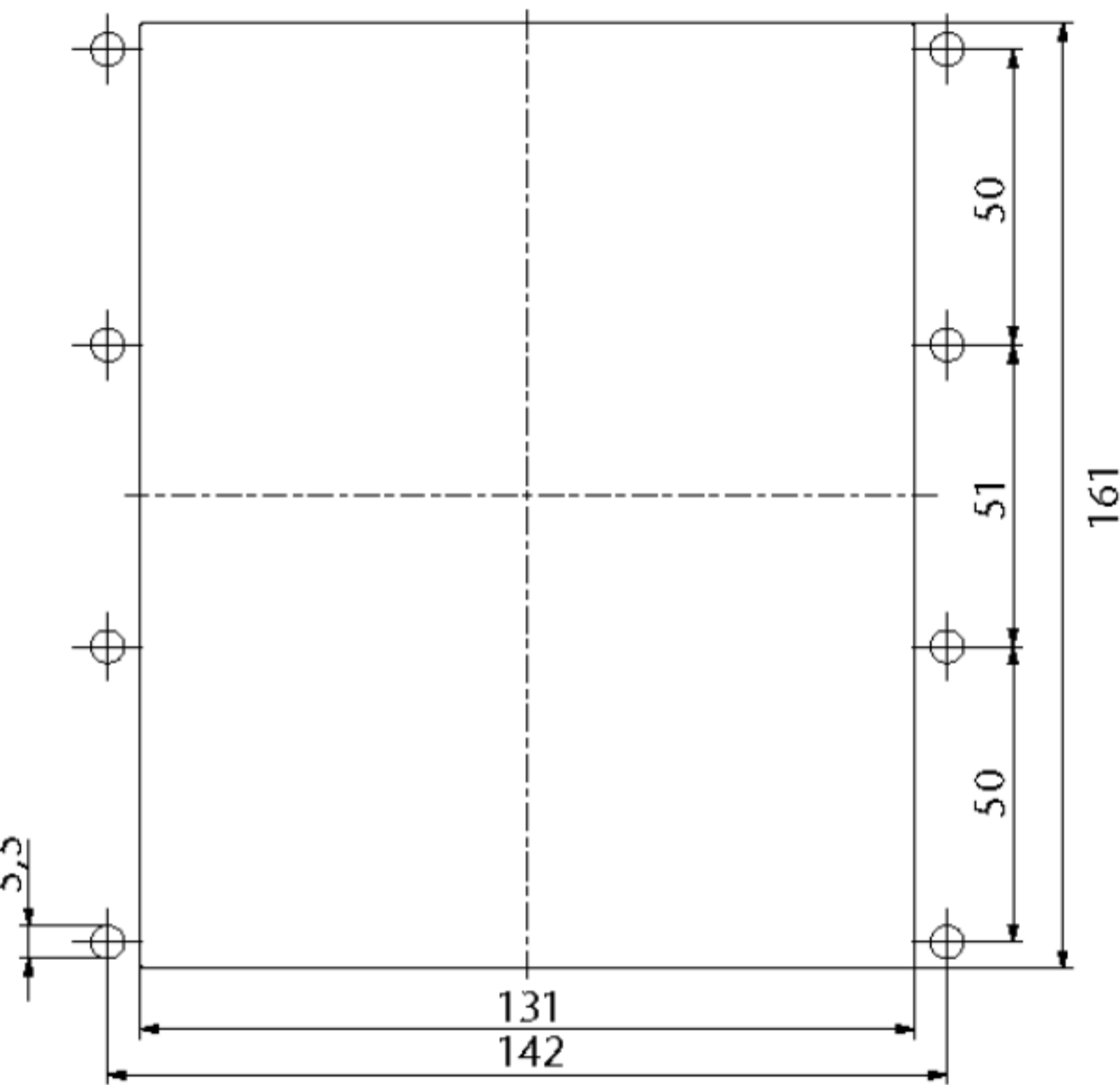
# CONTA-CABLE/ KDS-FP-Flanschplatten



KDS-FP 2 x 10/24

KDS-FP 3 x 10/24

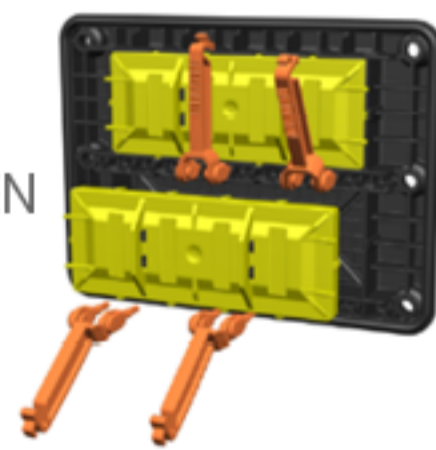
## PRODUKTDATEN



UL INNERE ABDECKUNG FÜR FLANSCHPLATTEN

Gemäß UL-Standard 508A (File E489821) gelten die folgenden Akzeptanzbedingungen:

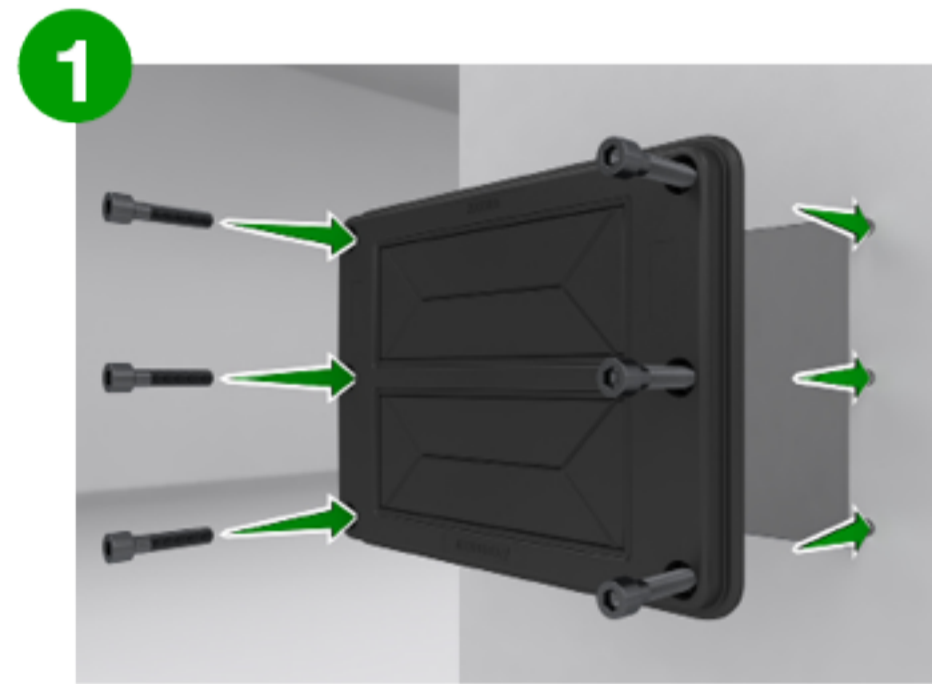
- Wenn es eine Position im Inlay gibt, die nur durch einen Blindstopfen abgedeckt ist, muss diese zusätzlich mit 2 KDS-FP-IVR Verriegelungselementen gesichert werden.
- Ein nicht ausgebrochener Flanschplattenabschnitt muss mit einer KDS-FP-AD/UL-Abdeckung abgedeckt werden. Diese Abdeckung muss dann mit 2 Verriegelungselementen KDS-FP-IVR gesichert werden.



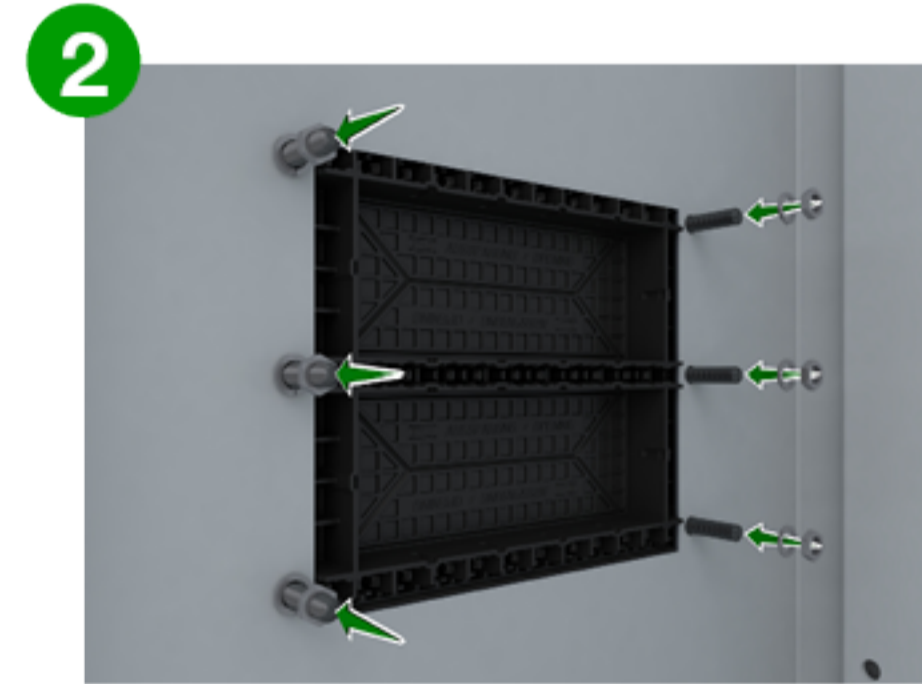
## KOMBINATIONSMÖGLICHKEITEN

Inlay			
1	2	4	6
28516,4	28517,4	28518,4	28519,4
x	x	x	x

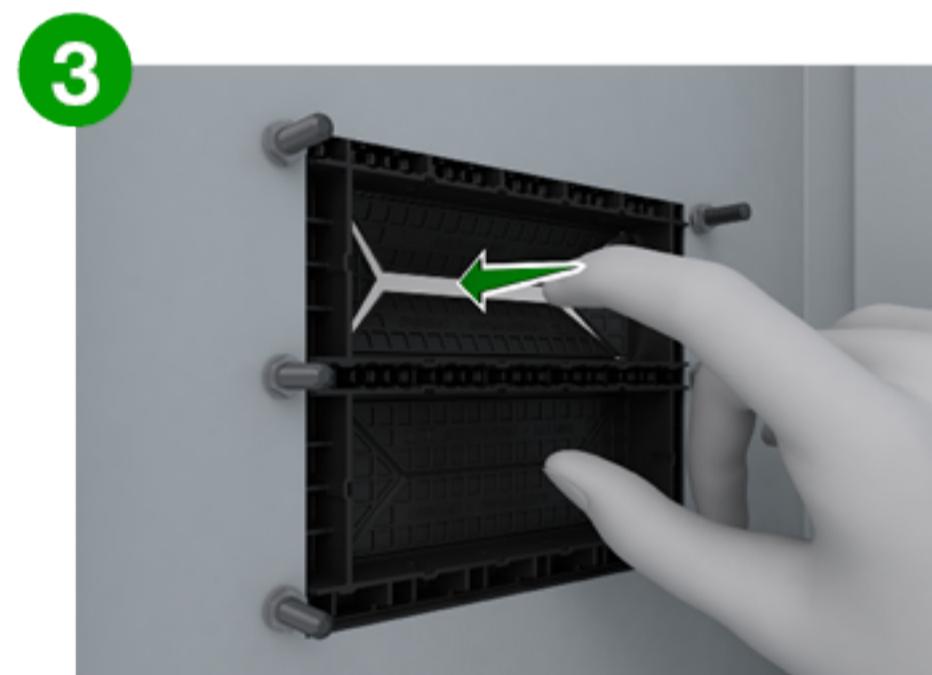
## INSTALLATION



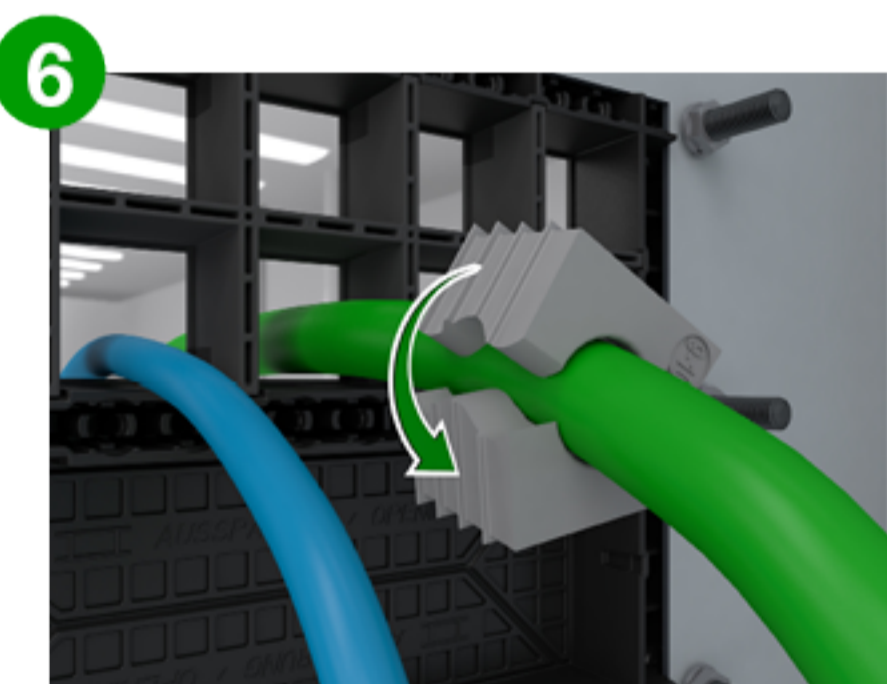
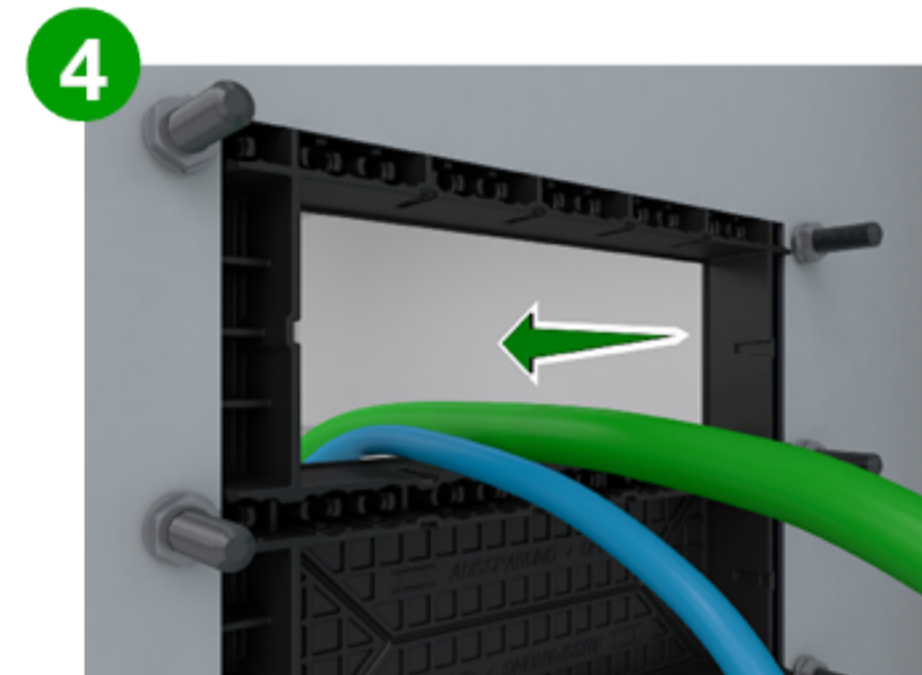
1 Setzen Sie die M5-Schrauben (ISO 4762) ein.



2 Anzugsdrehmoment von 3 Nm.



3 Brechen Sie den Flanschplattenabschnitt an den Sollbruchstellen aus.

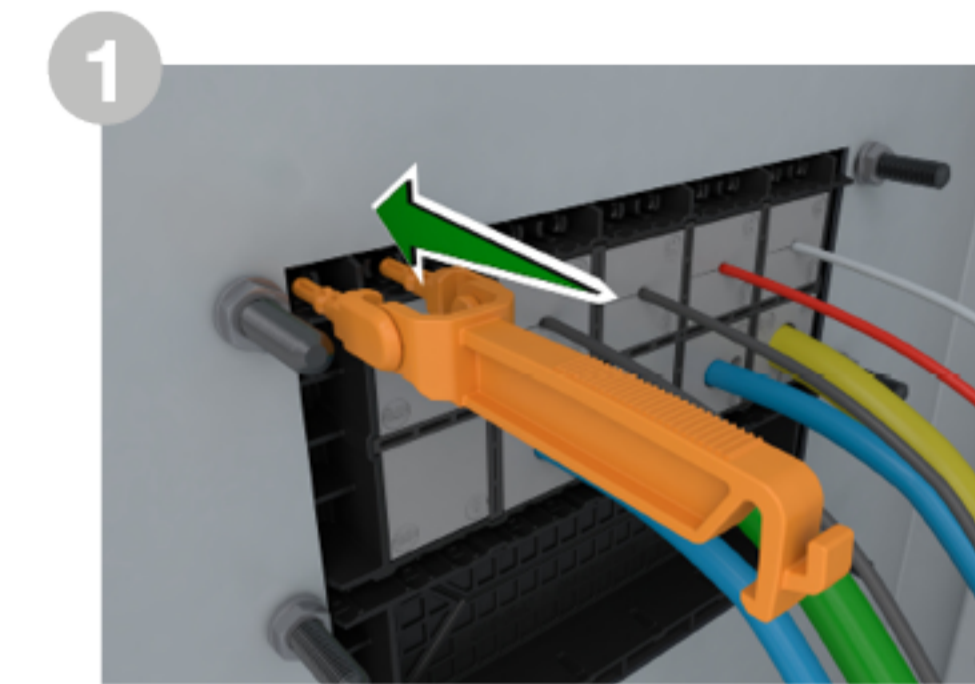


5 Klicken Sie das Inlay in seine Position.



7 Drücken Sie die Dichtung vollständig hinein.

## INNERE VERRIEGELUNG



1 Optionale innere Verriegelungselemente

